

Steelcraft[®] by American-Standard

Steel Doors, Frames and Entrance Systems

"It is hereby certified that the material shown and marked in this submittal is that proposed to be incorporated into Contract No. BREMERTON WWTTP is in compliance with the contract drawings and specifications, can be installed in the allocated spaces, and is submitted for your approval."

Certified by [Signature] Date 6-15-87

This submittal was reviewed for compliance with general requirements of division 08 and is not a contract document. The contractor is responsible for compliance with all specifications and requirements of the work. The contractor is responsible for obtaining all necessary permits and approvals. The contractor is responsible for the cost of this submittal.

Compliance is noted and subject to the foregoing.

Compliance is acknowledged and subject to the foregoing.

Compliance is acknowledged and subject to the foregoing. Sign and return for record.

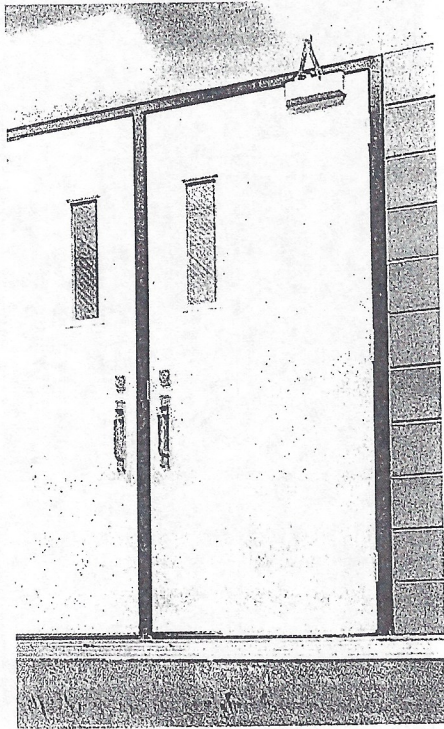
Bovay Northwest Inc.

By [Signature] Date 7-10-87

RECEIVED

JUL 13 1987

DEPT OF BREMERTON

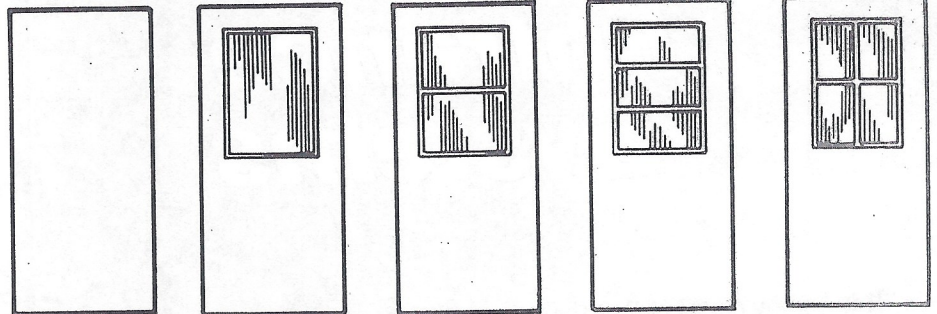


Steelcraft "L" doors are designed to meet architectural requirements for full flush doors. The L door combines the strength and dimensional stability of metal with the structural integrity of honeycomb core. The continuous bonding of core to metal provides an attractive, absolutely flat door, free of face welding marks. Tests have proved the high resistance to impact damage, low thermal conductivity and high STC rating of this door. In addition to strength and efficiency, Steelcraft L doors offer a wide selection of metals, gages, sizes, types, lite arrangements, louvers, colors and finishes, fire-ratings and hardware preparations necessary to meet today's design and construction requirements.

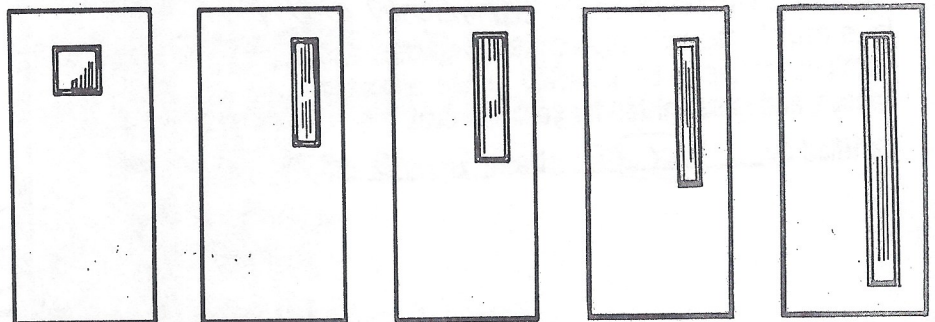
Door selections

- 1 3/8" - 20 gage steel
- 1 3/4" - 20, 18, 16 gage steel and 18 gage stainless steel

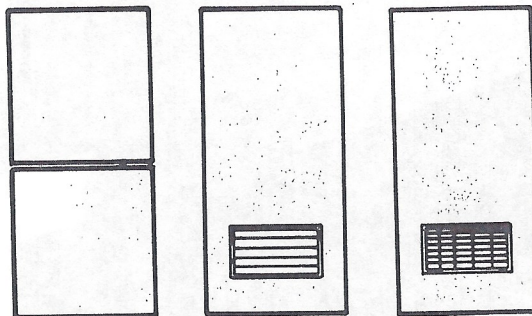
Shown below are just a few of the many types of L doors available from Steelcraft.



Full flush panel and half glass doors.

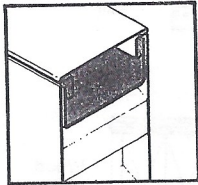


Doors with glass lites.

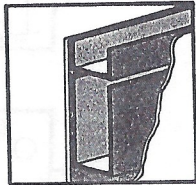


Dutch doors.

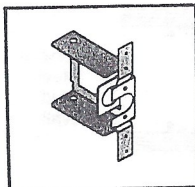
Doors with louvers or grilles.



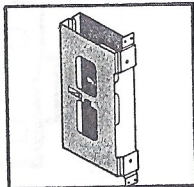
Snap-in steel top cap for exterior openings.



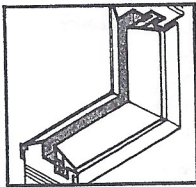
Steel top and bottom reinforcing channels. 14-gage closer reinforcement when required.



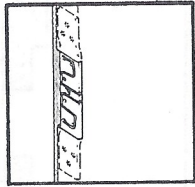
Rigid-design 16-gage cylindrical lock reinforcement.



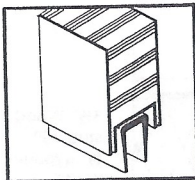
Box construction 16-gage mortise lock reinforcement.



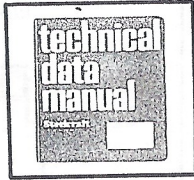
Aluminum glass trim (snap-in).



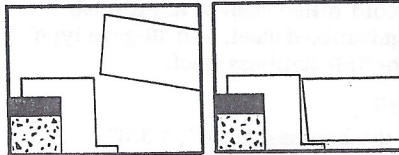
8-gage thick hinge reinforcement.



Double Bottom with Double Sweep.



Complete Technical Data Manual is available. Order direct from Steelcraft or contact the local Steelcraft Distributor.



Architectural beveled edge:

- Assures easy operation with frame, eliminating binding and sticking.
- Allows tighter fit for neat appearance.
- Makes field installation easier.

Vertical seam:

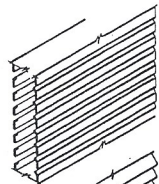
- Continuous mechanical interlock for maximum rigidity.
- Epoxy applied to inside of seam for additional strength, thermal break and moisture barrier.
- Hinge and lock edge seams are symmetrical.

Hinge position:

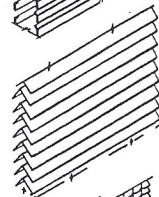
- Door edge mortised to accept hinge leaf.
- Hinge filler plates not required.
- Universal preparation* designed to accept .134" and .180" hinges.
- Reinforcement projection welded to door edge to insure long life, maximum strength and proper position.

*Patent no. 4,547,930

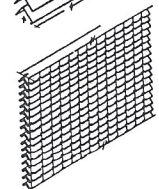
- Three standard louvers are available in a variety of sizes for standard doors.



- Stamped louvers: free air 26% total area.



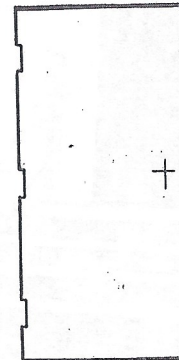
- Inverted "V" blade: Fixed, free air 55% total area.



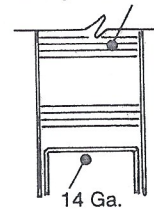
- Air conditioning grille: free air 81% total area (sight tight).

Louvers not recommended for exterior application.

D-14 heavy gage flush doors are built for light and medium duty security openings. Available in the F, V and N, designs.

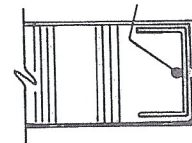


Honeycomb Core



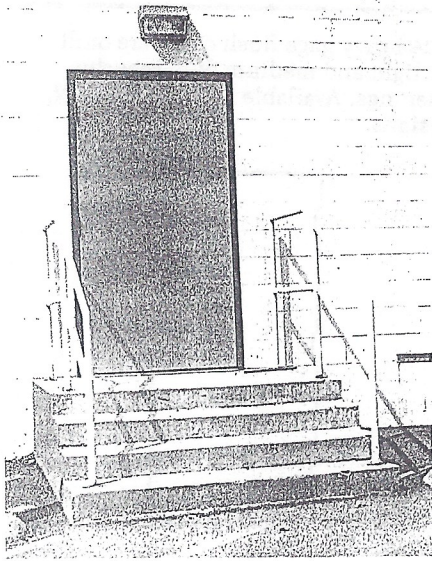
Top or Bottom

14 Ga. Channel on Lock and Hinge Edges.



Hinge or Lock Edge

Flush F-18, F-16, F-14 (2" face), F-12 (security frame), FS-16 (2" face stainless steel), FN-18,



Steelcraft manufactures a complete line of flush frames designed for common wall conditions such as wood stud, steel stud and masonry. Frames are manufactured from 18, 16, 14, and 12 gage cold-rolled steel or hot-dipped G60 galvanized steel, and 16-gage type 304 (or 316) stainless steel.

Sizes

Door thicknesses: 1 3/4", 1 3/8"
 Standard heights: 6'8", 7'0", 7'2", 7'10", 8'0", 10'0"
 Standard widths: increments of 2" from 1'6" to 10'0"

Flush frames can be furnished knocked-down or set-up and arc welded at miters and ground smooth.

Recommended usage:

F-18, FN-18 for 1 3/8" and 1 3/4" thick hollow core wood and 20-gage steel doors only.

F-16, FN-16, F-14, FN-14 and F-12 for 1 3/4" thick doors.

FE-16 and FE-14 for 1 3/4" thick double egress doors.

Galvanized steel is recommended where atmospheric conditions require extra protection.

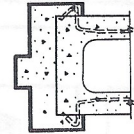
Type 304 stainless steel is recommended for areas where corrosive materials are present in the atmosphere.

Type 316 (optional) stainless steel is recommended for swimming pools where high concentrations of chlorine are used.

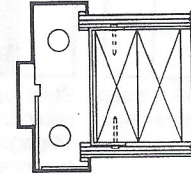
MU-16, MU-18 have drywall type jamb profiles but can be used in flush frame installations.

Typical wall conditions

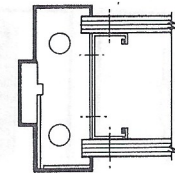
F series



Wrap around block wall

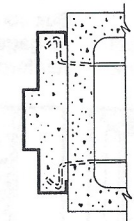


Wood Stud Wall

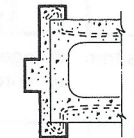


Closed Steel Stud Wall

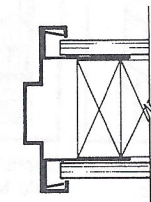
~~FN series~~



Butted Masonry

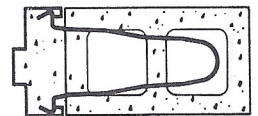


Wrap around concrete block

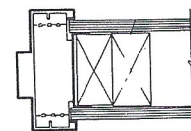


3 1/2" Wood stud with 5/8" gypsum board

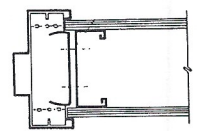
MU series



BLOCK



STEEL STUD

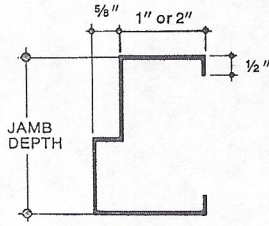


WOOD STUD

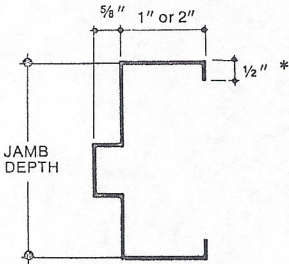
FN-16, FN-14 (1" face), FE-16, FE-14 (double egress), MU-18, MU-16 (2" face)

Profiles and jamb depths

Standard jamb depths: 3", 3 3/4", 4 3/4", 5 3/4", 6 3/4", 7 3/4", 8 3/4".



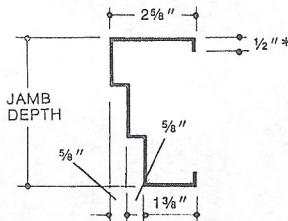
SINGLE RABBET
Jamb Depths*: 3", 3 3/4"
* Not available in FS16 and F12 series.



DOUBLE RABBET
Jamb Depths: 4 3/4", 5 3/4", 6 3/4", 7 3/4", 8 3/4".

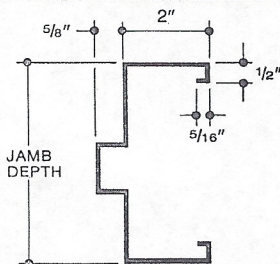
Cased opening frames are available in all jamb depths shown above.

F12 frames have 3/4" stop in lieu of 5/8".



DOUBLE EGRESS
Jamb Depths: 4 3/4", 5 3/4", 6 3/4", 7 3/4", 8 3/4".

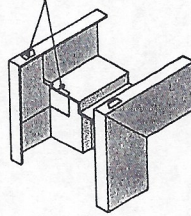
*5 3/4" frame has 7/16" backbends (4 7/8" throat opening)



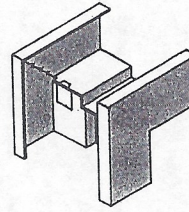
DOUBLE RABBET
Jamb depths: 4 1/2", 4 3/4", 5", 5 1/2", 5 3/4", 5 3/4", 5 3/4", 6", 7 1/8"
SINGLE RABBET Not shown
Jamb depths: 3 3/4", 3 3/4", 3 3/4"

Design features

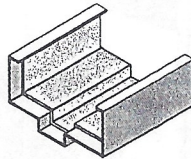
Bend tabs to assemble frame.



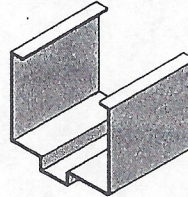
Mitered knocked-down corner



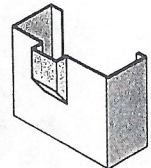
Set-up arc-welded corner



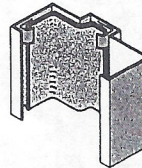
14-gage closer reinforcing sleeve (F & FN series only)



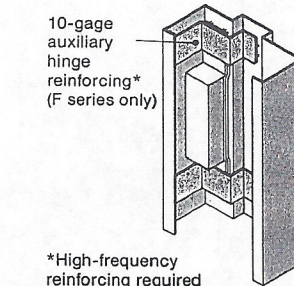
4" Head (F & FS series only)



Terminated Stop (F & FN series only)



Frames for lead lining (lead supplied and installed by local lead contractor F series only)



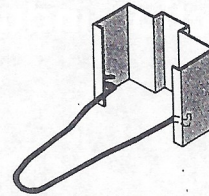
10-gage auxiliary hinge reinforcing* (F series only)

*High-frequency reinforcing required for top hinge only

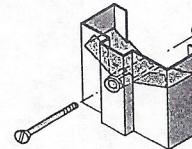
Anchors

Shown below are just a few of the wall and floor anchors available from Steelcraft.

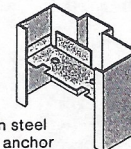
All jamb anchors and adjustable base anchors shipped loose. Most types of anchors available for 1" face frames.



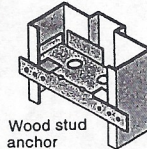
Adjustable wire anchor for masonry. Corrugated wire anchor designed to adjust to frame size. One anchor works with all frames. Wire anchor by independent test is stronger than plate type anchors.



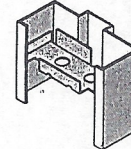
Anchor for existing wall (Not available in FS series)



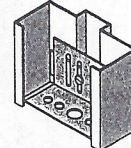
Open steel stud anchor



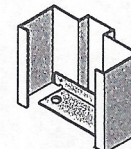
Wood stud anchor



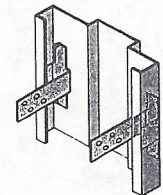
Closed steel stud anchor



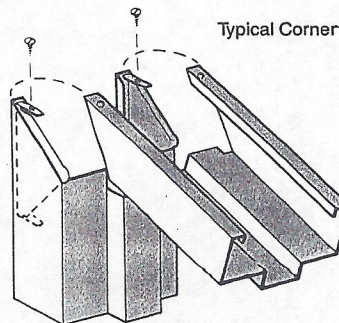
Adjustable base anchor adjusts up to 1 3/8" Standard on 2" face frames



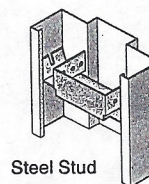
Optional fixed-base anchor for 2" face frames Standard on 1" face frames



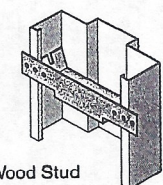
Steel and wood stud anchor for 1" face frame.



Typical Corner



Steel Stud

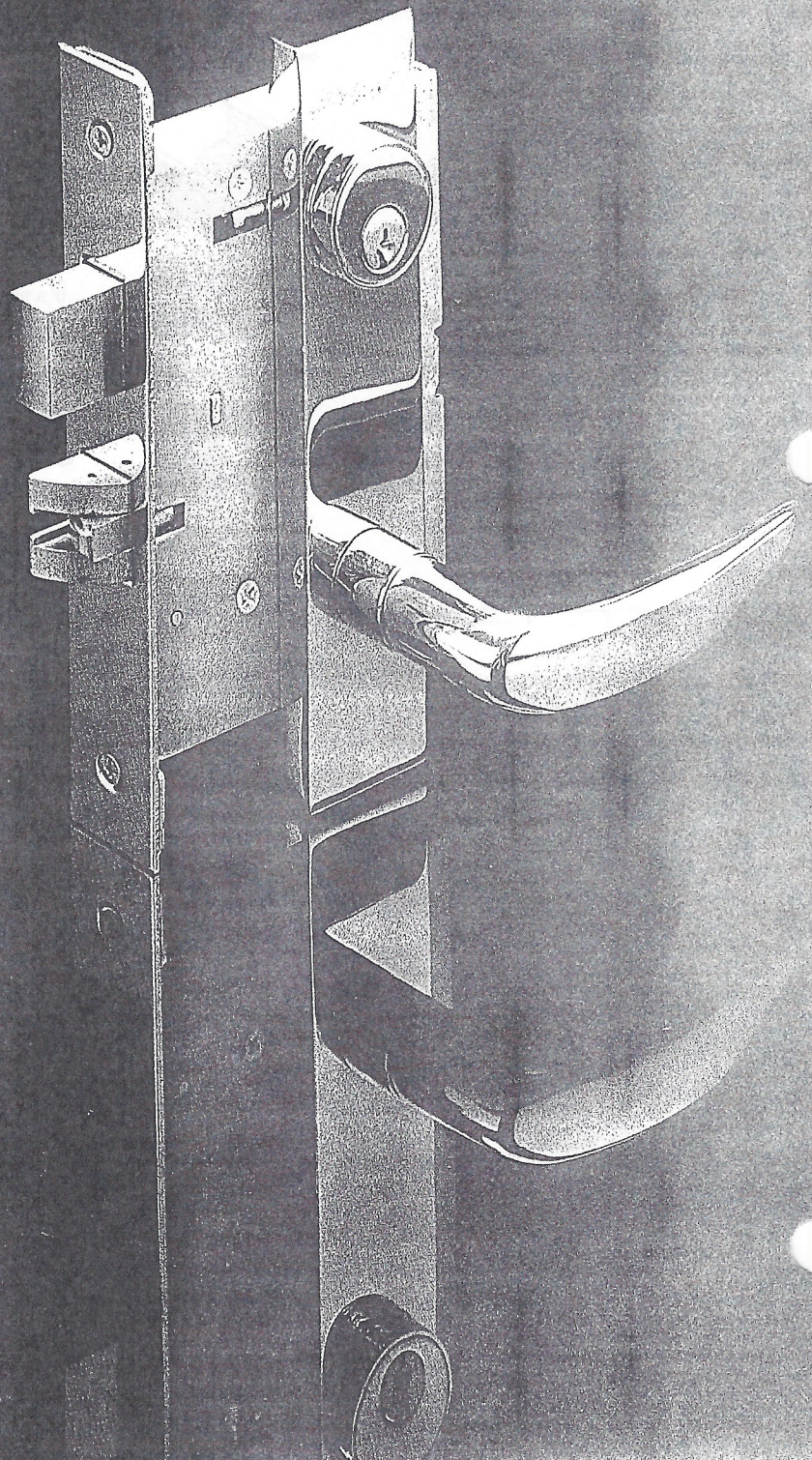


Wood Stud

SCHLAGE[®]

L-9000 Series

A revolutionary mortise lock
designed to meet the
changing needs of the
construction industry.



Finishes

Schlage lock finishes are durable, top-quality finishes obtained by the careful processing of solid brass, bronze, or stainless steel.

Where required, a protective clear epoxy lacquer coating is electrostatically applied and cured in a high temperature infrared oven. It is important that climatic conditions and usage be taken into consideration when selecting finishes. This is especially true in areas

subjected to strong corrosive vapors, humid climate, or sea air, which, in a short time, may have a damaging effect on metal finishes.

In some instances, for customer convenience, the most representative BHMA finish symbols are used to indicate similarity of appearance, regardless of base metal or finishing process.

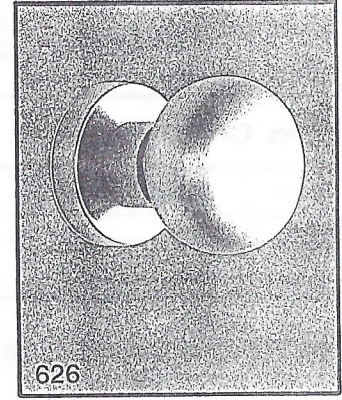
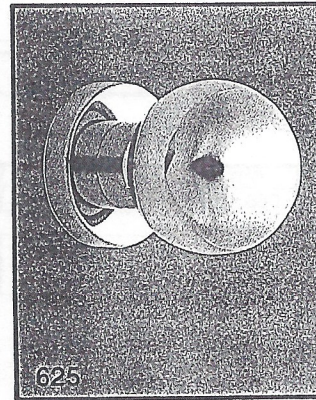
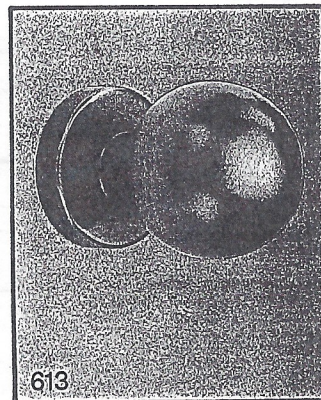
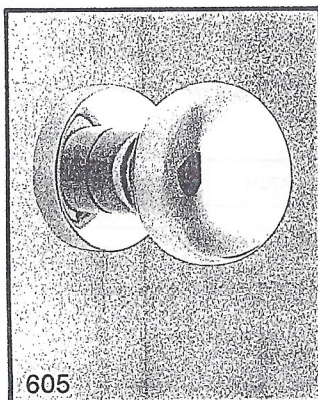
Symbol	Description
403	OIL RUBBED AS CAST BRONZE No Coating
415	OIL RUBBED BRONZE, DARK Oxidized Satin Bronze, Oil Rubbed, Dark, No Coating
416	OIL RUBBED AS CAST BRONZE DARK Unfinished, Oxidized, Oil Rubbed, Dark, No Coating
423	AS CAST BRASS, or BRONZE, Flat Black Coated
438	SIMULATED 613 BRONZE Clear Coated (71 and 72 Grip Handles only)
605 (3)	BRIGHT BRASS Clear Coated
606 (4)	SATIN BRASS Clear Coated

Symbol	Description
609 (5)	SATIN BRASS, BLACKENED Satin Relieved, Clear Coated
611 (9)	BRIGHT BRONZE Clear Coated
612 (10)	SATIN BRONZE Clear Coated
613 (10B)	OIL RUBBED BRONZE Oxidized Satin Bronze, Oil Rubbed, No Coating
618 (14)	BRIGHT NICKEL PLATED Clear Coated
622 (19)	SATIN BLACK Flat Black Coated
625 (26)	BRIGHT CHROMIUM PLATED No Coating
626 (26D)	SATIN CHROMIUM PLATED No Coating
629* (32)	BRIGHT STAINLESS STEEL NO Coating
630 (32D)	SATIN STAINLESS STEEL No Coating

*Escutcheons are finished in 618 Bright Nickel Plated—Clear Coated.

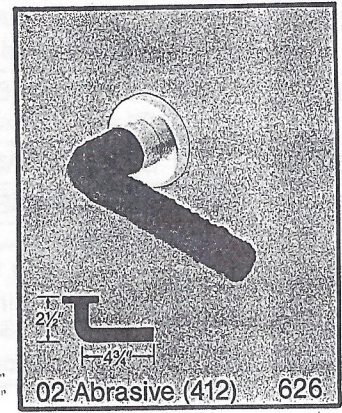
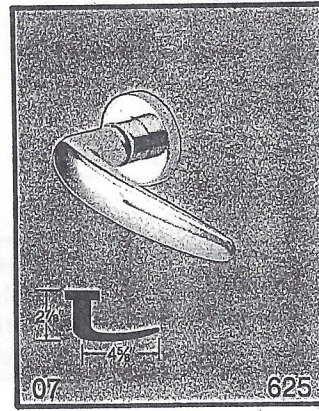
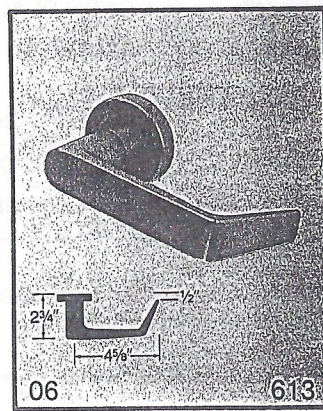
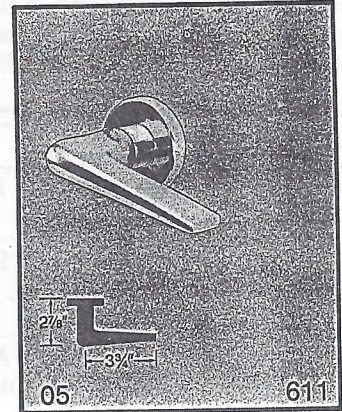
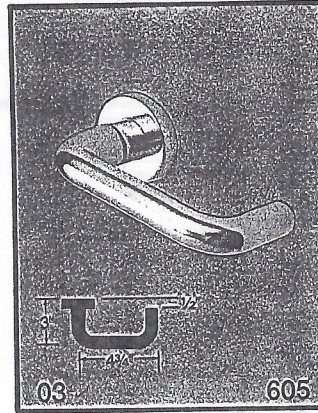
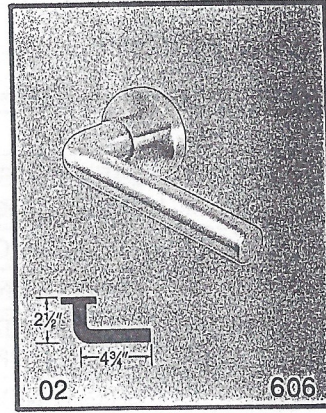
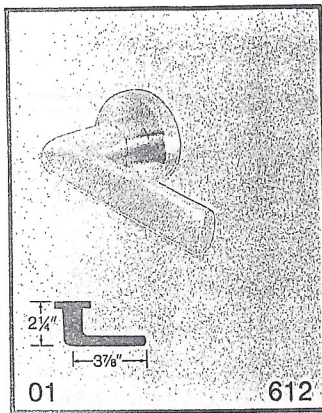
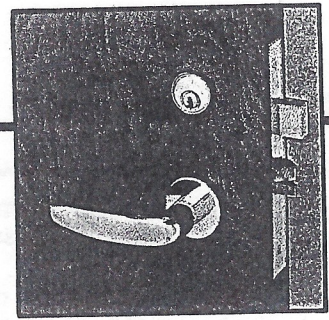
Finish designation numbers in the 600 Series are the BHMA Builders Hardware Manufacturers Association industry standard. The nearest old U.S. equivalent code designations are shown in parenthesis.

Refer to specific Catalog sections for design and finish availability.



Lever Designs

"L" Series lever designs are available in a variety of contemporary and traditional styles providing flexibility in hardware selection. All levers may be specified with either rose or escutcheon trim. All levers are solid cast brass, bronze, or stainless steel.



Levers	Finishes														
	403	415	416	423	605	606	609	611	612	613	622	625	626	629	630
01	■	■	■	■	■	■	■	■	■	■	■	■	■	■	■
02	■	■	■	■	■	■	■	■	■	■	■	■	■	■	■
03	■	■	■	■	■	■	■	■	■	■	■	■	■	■	■
05	■	■	■	■	■	■	■	■	■	■	■	■	■	■	■
06	■	■	■	■	■	■	■	■	■	■	■	■	■	■	■
07	■	■	■	■	■	■	■	■	■	■	■	■	■	■	■

Lever Order Sample:

QTY.	PRODUCT	OUTSIDE		INSIDE		DR THK	DOOR HAND				BS	LATCH	STRIKE	DIM	
		DES	FIN	DES	FIN		R	L	RR	LR					
4	L9453P	L	613	L	613	134	2			2				10-072	

See "How To Order" page 18 for complete details.

Functions

Schlage No.	Description	ANSI FED
L9010*	PASSAGE For Passage, Closet or any Door that does not require locking. • Latchbolt retracted by lever or knob from either side at all times.	F01 86N
L9040*	PRIVACY For Bathroom, Bedroom or Lavatory Doors where emergency entrance is required. • Latchbolt retracted by lever or knob from either side unless outside is locked by inside turn piece. • Operating inside lever or knob or closing door unlocks outside lever or knob. • To unlock from outside, remove emergency button, insert turn piece (furnished) in access hole and rotate.	F22
L0170	SINGLE DUMMY TRIM For Single Doors when fixed trim is required for one side only. • Lever or knob on one side held fixed by mounting bar.	
L0172*	PAIR DUMMY TRIM For Single Doors or Pairs of Doors when fixed trim is required for both sides of a door. • Lever or knob on both sides fixed by mounting bar.	
L9175**	SINGLE DUMMY TRIM For Single Doors or Pairs of Doors when non-operating trim is required for one side only. • Lever or knob on one side fixed. • Includes lock chassis and armor front.	
L9176**	PAIR DUMMY TRIM For Single Doors or Pairs of Doors when non-operating trim is required for both sides of a door. • Lever or knob both sides fixed. • Includes lock chassis and armor front.	

*Available functions for Grip Handle applications.
**When armored front is required as strike for inactive door, specify L9177 for single or L9178 for pair of dummy trim. Specify door hand.

Keyed Locks

Schlage No.	Description	ANSI FED
L9050*	OFFICE For Inner Office and Area Entry Doors. • Latchbolt retracted by lever or knob from either side unless outside is made inoperative by key outside or by rotating inside turn piece. • When outside is locked, latchbolt is retracted by key outside or by lever or knob inside. Outside lever or knob remains locked until thumbturn is returned to vertical or by counter clockwise rotation of key. • Auxiliary latch deadlocks latchbolt when door is closed.	F04 86E
L9070*	CLASSROOM • Latchbolt retracted by lever or knob from either side unless outside is locked by key. Unlocked from outside by key. • Inside lever or knob always free for immediate exit. • Auxiliary latch deadlocks latchbolt when door is closed.	F05 86J
L9080*	STOREROOM • Latchbolt retracted by key outside or by lever or knob inside. • Outside lever or knob always inoperative. • Auxiliary latch deadlocks latchbolt when door is closed.	F07 86EW
L9080EL	STOREROOM • Electrically locked. Outside lever or knob continuously locked by 24V AC or DC. • Latchbolt retracted by key outside or by lever or knob inside. • Switch or power failure allows outside lever or knob to retract latchbolt. • Auxiliary latch deadlocks latchbolt when door is closed. • Inside lever or knob always free for immediate exit.	
L9080EU	STOREROOM • Electrically unlocked. Outside lever or knob unlocked by 24V AC or DC. • Latchbolt retracted by key outside or lever or knob inside. • Auxiliary latch deadlocks latchbolt when door is closed. • Inside lever or knob always free for immediate exit.	
L9453*	ENTRANCE LOCK For Commercial and Residential Entry Doors. • Latchbolt retracted by lever or knob from either side unless outside is locked by 20° rotation of thumbturn. • Deadbolt thrown or retracted by 90° rotation of thumbturn. • When locked, key outside or lever or knob inside retracts deadbolt and latchbolt simultaneously. • Outside lever or knob remains locked until thumbturn is restored to vertical position. • Throwing deadbolt automatically locks outside lever or knob. • Auxiliary latch deadlocks latchbolt when door is closed.	F20 86A

L9465 FUNCTION WILL TAKE 10-12 WEEKS TO ORDER & RECEIVE FROM FACTORY - WE PROPOSE L9080 FUNCTION WHICH IS READILY AVAILABLE
 Thank you.

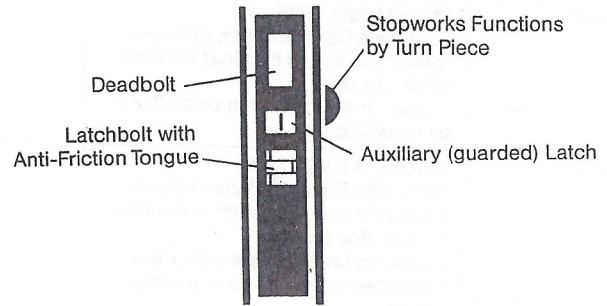
Schlage No.	Description	ANSI FED
L9456*	DORMITORY/EXIT For Dormitory or Exit Doors. • Latchbolt retracted by lever or knob from either side. • Deadbolt thrown or retracted by key outside or inside thumbturn. • Throwing deadbolt locks outside lever or knob. • Rotating inside lever or knob unlocks outside lever or knob.	F13 86FW
L9465	CLOSET/STOREROOM For Closet or Storeroom Door. • Latchbolt retracted by lever or knob from either side. • Deadbolt thrown or retracted by key outside.	
L9466	STORE/UTILITY ROOM For Storeroom or Utility Room Door. • Latchbolt retracted by lever or knob from either side. • Deadbolt thrown or retracted by key from either side.	F14
L9473	DORMITORY/BEDROOM LOCK For Dormitory or Bedroom Doors. • Latchbolt retracted by lever or knob from either side. • Deadbolt thrown or retracted by key outside or thumbturn inside.	F21 86B
L9486	HOTEL LOCK For Corridor Doors to Guest Rooms. • Latchbolt retracted by key outside or by lever or knob inside. Outside lever or knob always fixed. • Deadbolt thrown or retracted by inside thumbturn. When deadbolt is thrown, "DO NOT DISTURB" plate is displayed—all keys become inoperative except emergency or display keys. • Turning inside lever or knob retracts both deadbolt and latchbolt simultaneously. • Auxiliary latch deadlocks latchbolt when door is closed.	F15
L9060	APARTMENT ENTRANCE For Apartment House or Office Building Entrance Doors. • Latchbolt retracted by lever or knob from either side unless outside is locked by key from inside. • When locked, latchbolt retracted by key outside or lever or knob inside. • Auxiliary latch deadlocks when door is closed.	F09 86G
L9082	INSTITUTION For Permanently Locked Passage Doors. • Latchbolt retracted by key from either side. • Lever or knob on both sides always inoperative. • Auxiliary latch deadlocks latchbolt when door is closed.	

*Available functions for Grip Handle applications.

Deadlocks

Schlage No.	Description	ANSI FED
L9460	CYLINDER X THUMBTURN Deadlock. • Deadbolt thrown or retracted by key outside or thumbturn inside.	F17 86P
L9462	DOUBLE CYLINDER Double Cylinder Deadlock. • Deadbolt operated by key from either side.	F16 86T
L9463	CLASSROOM LOCK Classroom Deadlock. • Deadbolt thrown or retracted by key from outside. • Inside cylinder turn retracts deadbolt but cannot project it.	
L9464	CYLINDER X BLANK Deadlock. • Deadbolt thrown or retracted by key from one side. • No trim on opposite side.	F18 86S

Features



Symbols

- Cylinder
- Turn piece
- Outside knob or lever
- Cylinder turn
- Inside knob or lever
- Emergency turn piece
- Solid spindle
- Occupancy indicator
- Two piece spindle

Product Identification: L 9 4 8 6 P

- L = Prefix For All Mortise Locksets and Lock Cases.
- 9 = Indicates Lock Series.
- 4 = Pertains to Deadbolt Usage.
 - 0 = No Deadbolt
 - 1 = Dummy Trim (No Latch, No Deadbolt)
 - 4 = 1" Throw Deadbolt
- 86 = Function (See Descriptions on Lock Drawings)
- P = Cylinder Suffix (P = Full Face Cylinder with Compression Ring.
C = Concealed Cylinder. R = Interchangeable Core Cylinder.)

STANLEY®

STANDARD WEIGHT

F179 (ANSI A8133)
Steel — Polished and plated or bonderized and prime coated for painting

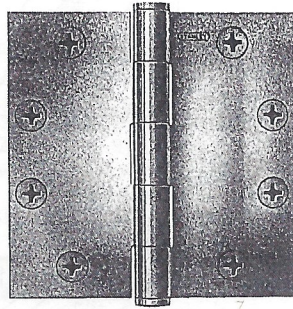
F179BP (US2H)
(ANSI A8133)
Steel — Galvanized with brass pins

F191 (ANSI A2133)
Brass or bronze — Polished and plated

F191 (US32)
(ANSI A5133)
Stainless steel — Polished

F191 (US32D)
(ANSI A5133)
Stainless steel — Polished, satin finish

FULL MORTISE HINGES



- For doors of residences, apartment houses and other medium weight low-frequency doors
- All hinges have template screw hole location for use on either wood or hollow metal doors and frames
- Use ball bearing hinges on high and average frequency doors and all doors equipped with door closers
- Equipped with easily seated non-rising pins
- Pins in non-ferrous butt hinges are stainless steel
- For transom hinge specify F179FSP
- Hinges can be furnished as follows:
with hospital tips — see page 31
with brass steeple tips or brass ball tips in 3½", 4", 4½", 5" and 6" sizes — see page 31
- Steel hinges are polished and plated to insure a fine durable finish

Size Open (Inches)	Gauge of Metal	Quantity and Size of Recessed Flat Head Screws Packed per Pair		Pair in Box with Screws	Pair in Case	Case Weight Average (lbs.)	
		Machine	Wood			Steel	Brass
**3 x3	.080	12 — ¾x 9	1	50	...	44
3½x3	.123	6 — ½x10-24	12 — 1 x10	1	50	60	64
3½x3½	.123	6 — ½x10-24	12 — 1 x10	1	50	66	72
4 x3½	.130	8 — ½x12-24	16 — 1¼x12	1½	24	38	44
4 x4	.130	8 — ½x12-24	16 — 1¼x12	1½	24	43	46
4½x4	.134	16 — ½x12-24	8 — 1¼x12	1½	24	51	54
4½x4½	.134	16 — ½x12-24	8 — 1¼x12	1½	24	55	60
5 x4	.146	16 — ½x12-24	8 — 1¼x12	1½	15	40	43
5 x4½	.146	16 — ½x12-24	8 — 1¼x12	1½	15	43	46
5 x5	.146	16 — ½x12-24	8 — 1¼x12	1½	15	46	51
*6 x4½	.160	20 — ½x¼-20	10 — 1½x14	1½	12	37	...
*6 x5	.160	20 — ½x¼-20	10 — 1½x14	1½	12	42	...
*6 x6	.160	20 — ½x¼-20	10 — 1½x14	1½	12	57	...

*These sizes available in F179 only

** Not available in F179. Use 741

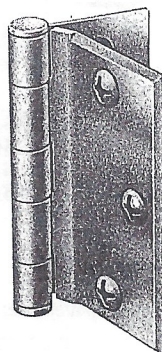
On sizes 3½"x3" and larger, screw quantities listed apply to non-ferrous hinges only

Steel hinges are furnished with same quantity of wood screws as machine screws

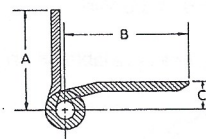
Smaller sizes furnished with all wood screws

Note: F179 is available in "wide throw hinges" in sizes: 3½x5 — 3½x6 — 4x5 — 4x6 — 4x7 — 4½x5 — 4½x6 — 4½x7 — 4½x8 — 5x7 — 5x8, specifications on request

HALF SURFACE HINGES



- For low frequency mineral core or wood doors with hollow metal frames
- Easily applied as only the jamb leaf is mortised
- Use ball bearing hinges on all doors equipped with door closers



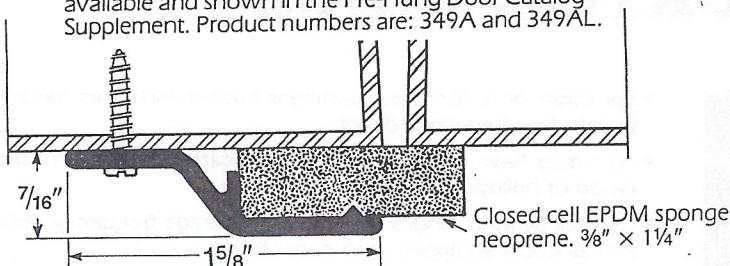
Measurements below
For application
see index

Size, Length of Joint (Inches)	Width		Offset (Inches) (C)	Gauge of Metal	Quantity and Size of Recessed Head Machine Screws per Pair		Pair in Box with Screws	Pair in Case	Case Weight Average (lbs.)
	Jamb Leaf (Inches) (A)	Door Leaf (Inches) (B)			F.H. for Jamb Leaf	O.H. for Door Leaf			
4½	2⅙	2⅞	⅞	.134	8 — ½x12-24	6 — 2x¼-20	1½	15	37

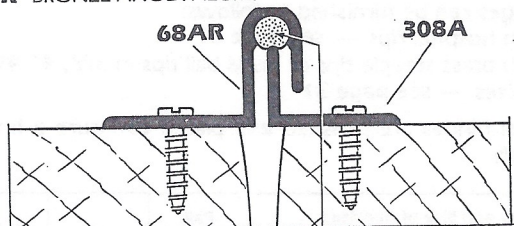
Packed with machine screws and grommet nuts — see page 34
Finishes described on page 40



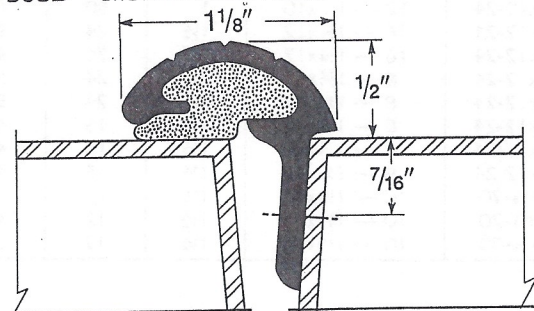
NOTE: Pemko's springbolt astragal for residential use is available and shown in the Pre-Hung Door Catalog Supplement. Product numbers are: 349A and 349AL.



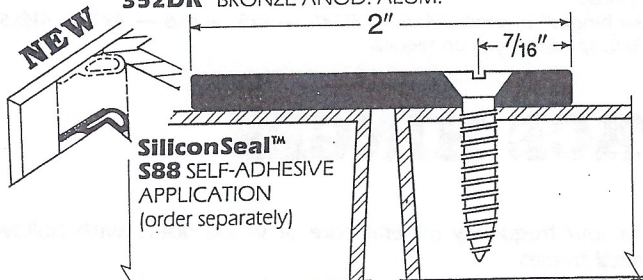
- 375AR** EXTR. ANOD. ALUM. with closed cell sponge neoprene.
- 375BR** EXTR. BRONZE (Brass) with closed cell sponge neoprene.
- 375DR** BRONZE ANOD. ALUM.



- 68AR** EXTR. ALUM and neoprene.
- 68DR** BRONZE ANOD. ALUM.
- 308A** EXTR. ALUM.
- 308D** #6 x 5/8" cad. plated sheet metal screws. BRONZE ANOD. ALUM.

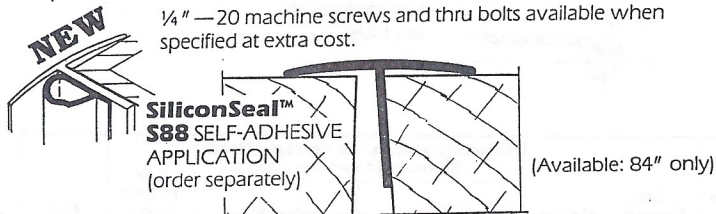


- 352AR** EXTR. ANODIZED ALUM. and sponge neoprene. Heavy duty astragal.
- 352DR** BRONZE ANOD. ALUM.



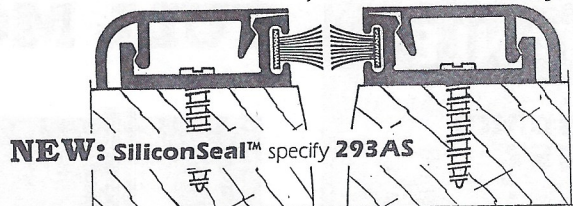
- 357A** EXTR. ANODIZED ALUM. 1/8" x 2", #10 x 1" cad. plated SMS.
- 357D** BRONZE ANOD. ALUM.
- (357A & D AVAILABLE: 84", 96", 120", only)**
- 357SP** STEEL gray prime coat, 3/16" x 2"; #14 x 1" cad. plate SMS.
- 357SC** STEEL cad plate, 3/16" x 2"; #14 x 1" cad plated SMS.
- (357SP & SC AVAILABLE: 84", 96" only)**

1/4" — 20 machine screws and thru bolts available when specified at extra cost.



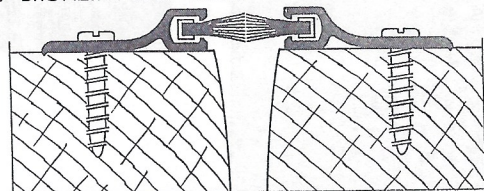
- 359A** EXTR. ALUM. Fastenings—nails or screws—extra. For light residential installations.
- 359D** BRONZE ANOD. ALUM.

© Pemko, Inc.

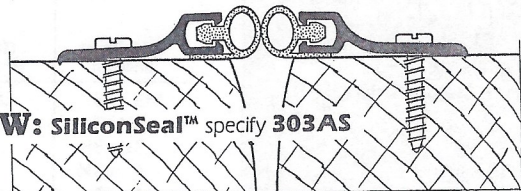


NEW: SiliconSeal™ specify **293AS**

- 293AW** EXTR. ANODIZED ALUM. with pile (shown)
- 293AV** EXTR. ANODIZED ALUM. with vinyl (not shown)
- #6 x 5/8" cad. plated sheet metal screws. Snap-on case covers screws.
- 293AS** EXTR. ANOD. ALUM. w/**SiliconSeal™**
- 293DV** BRONZE ANOD. ALUM.

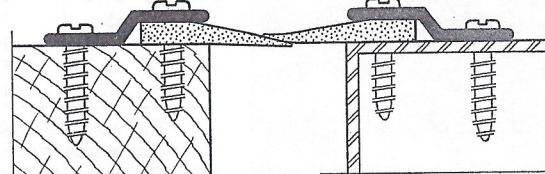


- 309AW** EXTR. ALUM. slotted with pile insert. #6 x 5/8" cad. plated sheet metal screws.
- 309DW** BRONZE ANOD. ALUM.



NEW: SiliconSeal™ specify **303AS**

- 303DV** BRONZE ANOD. ALUM.
- 303AV** EXTR. ALUM. slotted with vinyl insert. #6 x 5/8" cad. plated sheet metal screws.
- 303AS** EXTR. ANOD. ALUM. w/**SiliconSeal™**

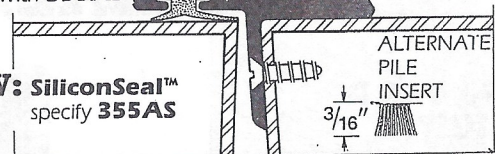


- 305AN** EXTR. ALUM. with gray hypalon rubber cemented on. (Black neoprene available when specified)
- 305DN** BRONZE ANOD. ALUM.
- 305BN** EXTR. BRONZE (Brass) with gray hypalon rubber cemented on. #4 x 5/8" cad. or brass plated sheet metal screws. Note: Strips punched on each flange alternately 6" between centers.

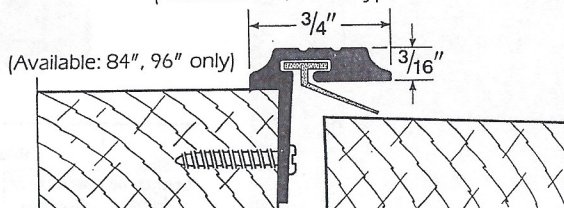


with **355AS**

NEW: SiliconSeal™ specify **355AS**

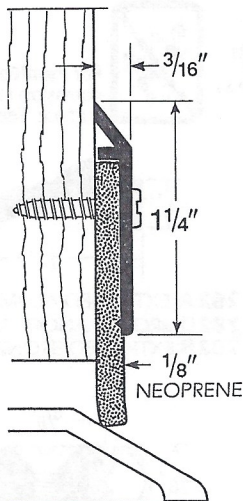


- 355AV** EXTR. ANODIZED ALUM. with vinyl insert.
- 355DV** BRONZE ANOD. ALUM.
- 355AW** EXTR. ANODIZED ALUM. with pile insert.
- 355AS** EXTR. ANOD. ALUM. w/**SiliconSeal™**
- #8 x 1" FH cad. plated SMS.
- (Available: 84", 96" only)

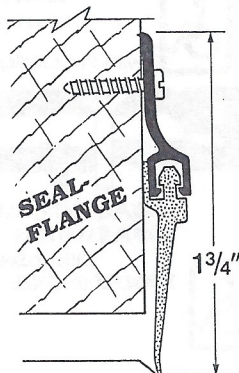


- 356AV** EXTR. ALUM. with vinyl insert. #6 x 5/8" cad. plated sheet metal screws.
- 356DV** BRONZE ANOD. ALUM.

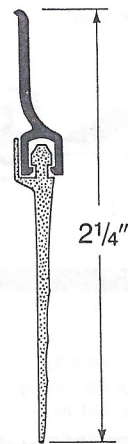
DOOR BOTTOM PROTECTION (full scale except as noted)



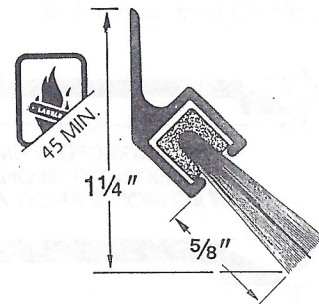
315AN EXTR. ANODIZED ALUM. slotted
315BN EXTR. BRONZE (brass) slotted, with
 $\frac{1}{8}$ " \times $1\frac{3}{8}$ " black neoprene.
315DN BRONZE ANOD. ALUM.



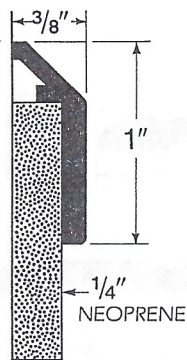
307AV EXTRU. ALUM.
with vinyl insert.
#6 \times $\frac{5}{8}$ " cad.
plated S.M.S.
307DV BRONZE ANOD. ALUM.



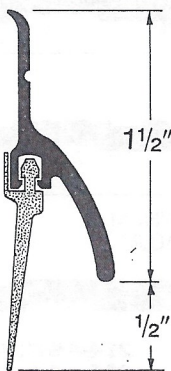
56AV EXTRUDED ALUMINUM
with vinyl $1\frac{3}{8}$ " wide.
56DV BRONZE ANOD. ALUM.



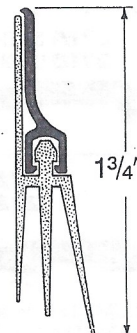
45A-062 EXTR. ALUM. &
FIN BRUSH
(polypropylene)
45D-062 BRONZE ANOD. ALUM.



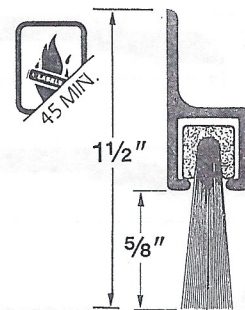
368AN EXTR. ANODIZED ALUM.
slotted, with $\frac{1}{4}$ " \times $1\frac{3}{8}$ " black neoprene.
#6 \times $\frac{7}{8}$ " cadmium plated sheet metal screws.
368DN BRONZE ANOD. ALUM.



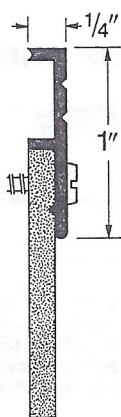
345AV EXTR. ALUM.
with vinyl.
345DV BRONZE ANOD. ALUM.



57AV EXTRUDED ALUMINUM
with black vinyl.
57DV BRONZE ANOD. ALUM.

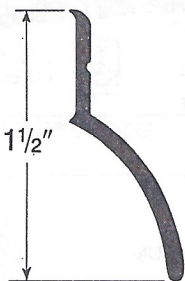


18A-062 EXTR. ALUM. &
FIN BRUSH
(polypropylene)
18D-062 BRONZE ANOD. ALUM.



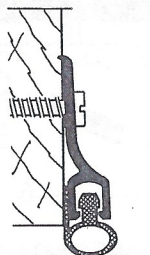
321AN EXTRA. ANODIZED ALUM.
slotted, with $\frac{1}{8}$ " \times $1\frac{3}{8}$ " black neoprene.
321DN BRONZE ANOD. ALUM.

© Pemko, Inc.

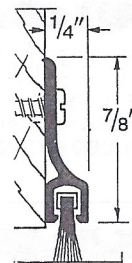


345A EXTR. ALUM.
345B EXTR. BRONZE (brass) #6 \times $\frac{5}{8}$ " sheet metal screws punched holes.
345D BRONZE ANOD. ALUM.

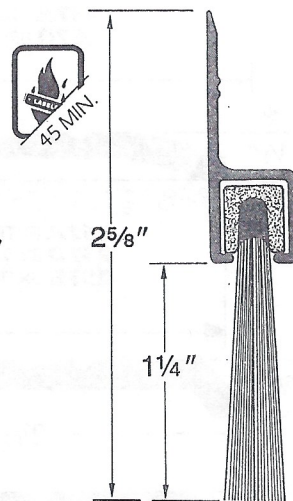
NEW



303AS EXTR. ALUM.
SLOTTED
SiliconSeal™ insert
303DS BRONZE ANOD. ALUM.



309AW EXTRUDED ALUMINUM
slotted, wool pile insert.
309DW BRONZE ANOD. ALUM.



18A-125 EXTR. ALUM. &
FIN BRUSH
(polypropylene)



THRESHOLD SADDLES

(full scale except as noted)

OP—OVERALL PRODUCT, IN PLACE

All aluminum extrusions also available with gold (G) finish at extra cost.



NEW

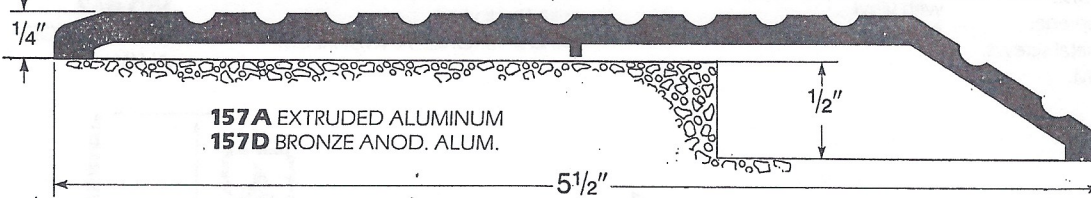
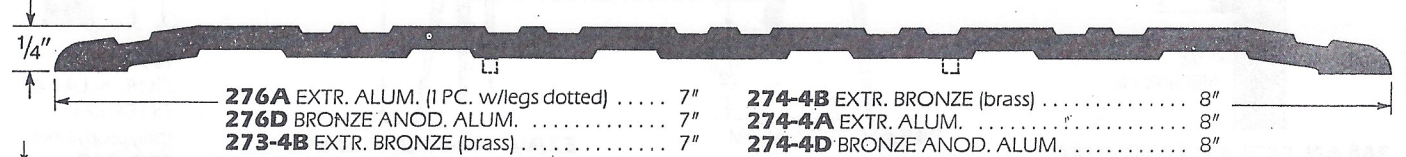
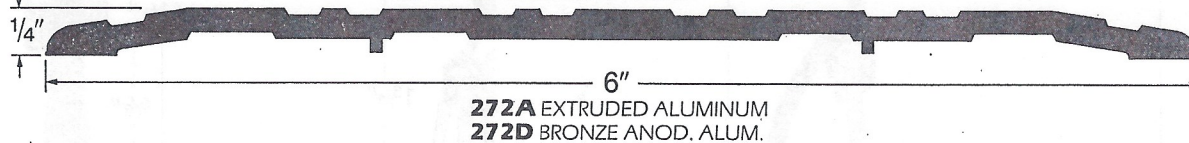
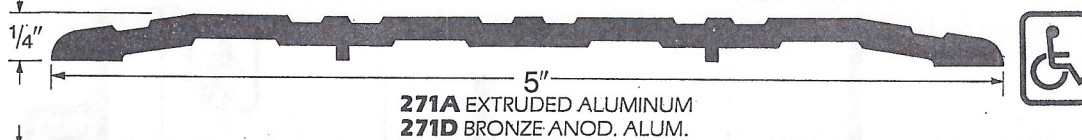
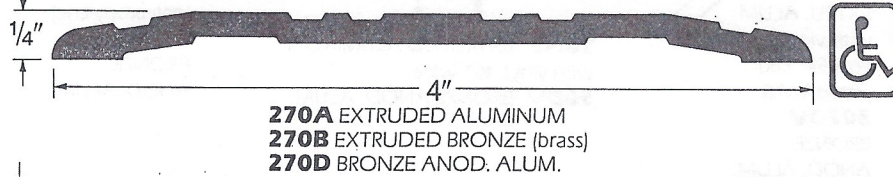
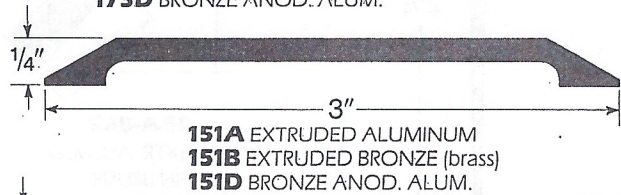
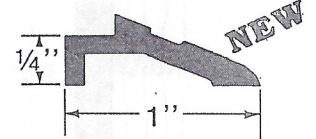
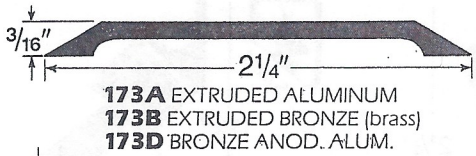
BUMPER STRIP

(furnished drilled w/#10 FH.M.S.)

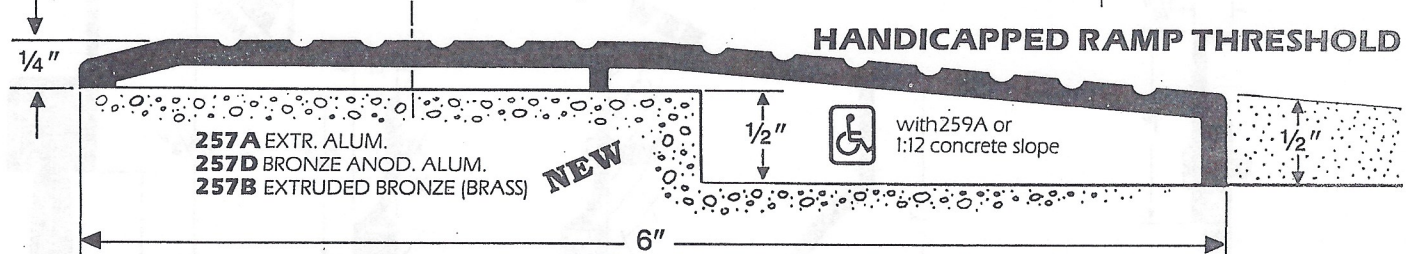
(with 1/4" saddle)



For PemKote™ skid & corrosion resistant surface. See Pg. 2



For PemKote™ skid & corrosion resistant surface. See Pg. 2



HANDICAPPED RAMP THRESHOLD



10 cadmium plated or solid brass slotted or Phillips wood screws of appropriate length are furnished with all PEMKO thresholds and saddles. (Stainless steel screws where needed for corrosive environments are available at extra cost.)

