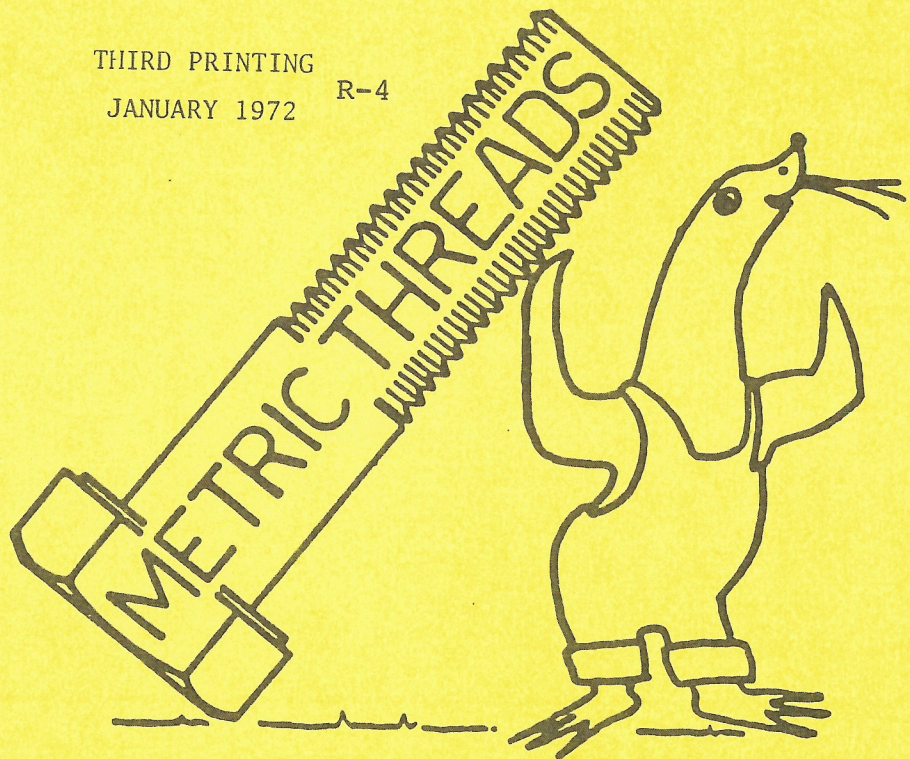


SEWAGE PUMP

C-3082

PARTS LIST

THIRD PRINTING R-4
JANUARY 1972



FLYGT CORPORATION

A Subsidiary of ITT

FLYGT

129 GLOVER AVENUE, NORWALK, CONN. 06856

C-3082 MASTER SPECIFICATION SHEETModel Numbers:

CP 3082.180 for permanent submersible installation in wet pit

CT 3082.180 for permanent installation in dry pit

CS 3082.180 for portable submersible use

Nominal Sizes:

CP 3082.180 4" (Class 125 Cast Iron Flanges)

CT 3082.180 3" x 4" (Class 125 Cast Iron Flanges 3" Outlet, 4" Inlet)

CS 3082.180 3" (Hose Connection for 3" Hose)

Power Cable: #14/4 AWG Submersible Pump Cable, Max. O. D.: 0.623 inch
(15.8 mm)

Impeller Selection Chart:

Impeller Code	STANDARD ON					
	CP		CS		CT	
	3 ϕ	1 ϕ	3 ϕ	1 ϕ	3 ϕ	1 ϕ
082-434	X	-	X	-	-	-
082-436	X	X	X	-	X	-
082-438	X	X	X	X	X	X
082-634	X	-	-	-	X	-

NOTE: Impellers must be used only in the combinations marked with X.

082-634 Impeller is used on 6-pole motor.

Specifications:

	CP		CS		CT		CP & CT
	3 ϕ	1 ϕ	3 ϕ	1 ϕ	3 ϕ	1 ϕ	3 ϕ
Rated Max. HP	2.5	2.0	2.5	1.5	1.8	1.5	0.8
Rated Max. KW	2.5	2.0	2.5	1.5	1.8	1.5	0.85
Rated Voltage	230/460 200 or 575*	230	230/460 200 or 575*	230	230/460 200 or 575*	230	230/460
Rated Max. Amp.	7.4/3.7 8.5 or 3.0	9.5	7.4/3.7 8.5 or 3.0	7.5	5.6/2.8 6.5 or 3.0	7.5	3.2/1.6
RPM	1700						1150
Weight Lbs.	216**		216		215		6-Pole Motor

*Separate stators for 200V and 575V service.

**Pump and Sliding Bracket only, for Discharge Connection add 77 lbs.

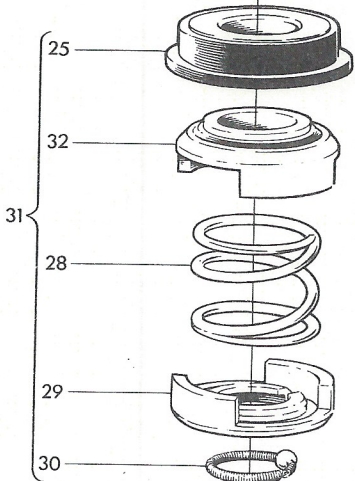
ITEM	DESCRIPTION	PART NO.	Required for Model		
			CP	CS	CT
1	Key (for Items 50 & 42)	80 67 02	1	1	1
2	Stud (for Item 49) M 12 x 55	80 95 30	4	4	4
3	Hex Cap Screw (for Items 36 & 44) M 8 x 20	81 41 04	10	10	10
4	Hex Cap Screw (for Item 33) M 12 x 20	81 41 52	2	2	2
5	Slotted (Pan) Head Screw (for Item 46) M 8 x 14	81 73 87	2	2	2
6	Allen (Socket) Head Cap Screw (for Items 39 & 45) M 10 x 35	82 00 53	7	7	7
7	Self Tapping Screw (for Item 43)	82 20 01	2	2	2
8	Drive Screw (for Item 52)	82 20 90	8	8	8
9	Hex Nut (for Item 2) M 12	82 23 59	4	4	4
10	Washer (for Item 3)	82 35 16	3	3	3
11	Spring Washer (for Item 6)	82 48 63	7	7	7
12	Seal Washer (for Item 37)	82 50 65	3	3	3
13	Retaining Ring (for Item 22)	82 58 96	1	1	1
14	O-Ring (for Item 45)	82 74 17	1	1	1
15	O-Ring (for Items 21 & 41)	82 77 88	1	1	1
16	O-Ring (for Items 36 & 41)	82 74 74	1	1	1
17	O-Ring (for Items 39 & 41)	82 74 21	1	1	1
18	O-Ring (for Items 40 & 41)	82 74 83	1	1	1
19	O-Ring (for Items 40 & 46)	82 74 93	1	1	1
20	O-Ring (for Items 46 & 49)	82 74 95	1	1	1
21	Upper Bearing (SKF 6204 2RS)	83 32 29	1	1	1
22	Lower Bearing (SKF 6305 2RS)	83 32 67	1	1	1
23	Allen (Socket) Head Cap Screw (for Item 50) M 10 x 20	84 42 32	1	1	1
24-31	Mechanical Shaft Seals (see Fig. 2 on page 5)				
33	Handle	303 05 00	1	1	1
34	Ground Washer (for Item 36)	303 09 00	2	2	2
35	Washer (for Items 23 & 50)	338 13 00	1	1	1
36	Terminal Board Ass'y	303 54 00	1	1	1
] Slotted Cap Nuts	303 62 00	16	16	16
] Jumperstrips	83 48 02	3	3	3
37	Inspection Screw (for Item 40)	303 63 00	3	3	3

ITEM	DESCRIPTION	PART NO.	Required for Model		
			CP	CS	CT
38	Cover Plate (for Item 41)	303 82 00	1	1	1
39	Junction Box Cover	303 93 00	1	1	1
40	Stator Housing	303 95 00	1	1	1
40a	Export Name Plate	320 69 00	1	1	1
41	Bearing Housing, Upper	303 96 00	1	1	1
42	Rotor Unit	303 97 00	1	1	1
43	Plate (for Items 40 & 52)	304 05 01	1	1	1
44	Bearing Cover (for Item 22)	304 06 00	1	1	1
45	Bearing Housing, Lower	304 07 00	1	1	1
46	Oil Housing	304 08 00	1	1	1
47	Pressure Equalizer	310 04 00	1	1	1
48	Wear Ring (for Item 49)	303 50 00	1	1	1
49	CP Volute (Flange 4" undrilled)	304 09 00	1	-	-
49a	CS Volute (Flange 3" drilled 1882)	304 09 01	-	1	-
49b	CT Volute (Flange drilled Class 125)	304 09 05	-	-	1
50	Impeller* Code 082-434	304 12 00			
	Code 082-436	304 14 00			
	Code 082-438	304 16 00			
	Code 082-634 (6-Pole)	304 12 00			
51	Stator Unit 230/460V	310 17 37	1	1	1
	Stator Unit 575V	304 00 51	1	1	1
	Stator Unit 230/460V	338 10 37	1	-	1
	Stator Unit 200V	304 00 27	1	1	1
51a	Connecting Diagram Decal 230/460V	303 57 00	1	1	1
	575V	291 21 00	1	1	1
51b	Stator Indexing Pin	80 23 39	1	1	1
52	Data Plate	293 66 01	1	1	1
53	Cable Entry Ass'y (see separate page 6)				

*See Impeller Selection Chart on page 1.

TOOLS: Impeller Puller	303 60 00
Allen (Socket Hd.) Wrench (for Item 37)	84 17 10
Allen (Socket Hd.) Wrench (for Items 6 & 23)	303 53 00

NOTE: Only one set of Tools will be furnished for each installation (or job site) utilizing identical pump units, unless requested by special order.

	ITEM	DESCRIPTION	PART NO.	QTY.
	31	Upper Seal Ass'y Consisting of:	335 36 03	1
	25	Seal Ring, Stationary	(337 95 00)	1
	32	Seal Ring, Rotating	(335 38 02)	1
	28	Compression Spring	301 21 05	1
	29	Stop Ring	345 45 00	1
	30	Stop Spring	301 19 05	1

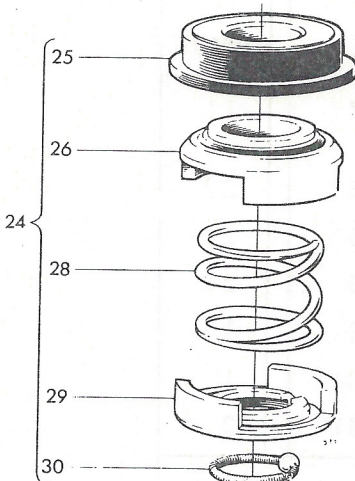
	ITEM	DESCRIPTION	PART NO.	QTY.
	24	Lower Seal Ass'y Consisting of:	335 36 02	1
	25	Seal Ring, Stationary	(337 95 00)	1
	26	Seal Ring, Rotating,	(335 38 01)	1
	28	Compression Spring	301 21 05	1
	29	Stop Ring	345 45 00	1
	30	Stop Spring	301 19 05	1

Fig. 2

NOTE: PARTS IN PARENTHESES NOT AVAILABLE SEPARATELY.

CABLE ENTRY

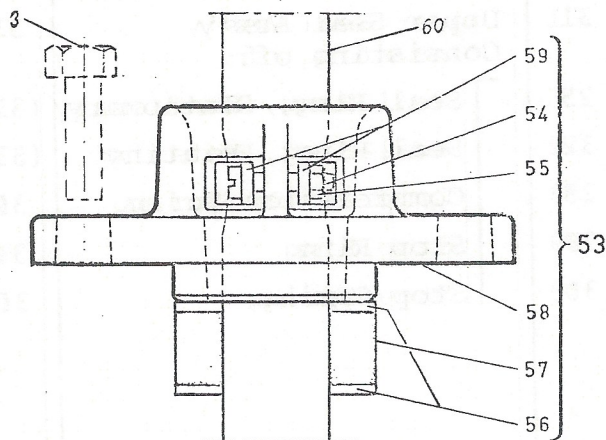


Fig. 3

ITEM	DESCRIPTION	PART NO.	REQ'D
53	Cable Entry Ass'y consisting of:	306 74 17	1
54	┌ Slotted Fillister Head Screw M 5 x 25	81 73 62	2
55	└ Hex Nut M 5	82 23 55	2
56	Washer	82 40 55	2
57	Grommet	84 35 32	1
58	Cable Entry Flange	(303 74 00)*	1
59	└ Clamp	(306 77 03)*	2
60	Cable #14/4 AWG Submersible Pump Cable 0.623" (15.8 mm) O. D.		

*PARTS IN PARENTHESES NOT AVAILABLE SEPARATELY.

CP ACCESSORY GROUP (See Fig. 4)

ITEM	DESCRIPTION	PART NO.	SIMPLEX	DUPLEX
70	Hex Cap Screw M 12 x 45	81 41 58	4	8
75	Sliding Bracket	303 46 00	1	2
76	Discharge Connection Ass'y	310 19 05	1	2
	└ Disch. Conn. casting only	310 18 05	1	2
(71)	└ 3/4" Hex Nut M 20	02 01 51	4	8
(72)	└ 3/4" Flat Washer	02 01 52	4	8
(73)	└ Hook Anchor Bolt 3/4" x 10"	02 01 50	4	8
(74)	└ Rubber Sleeve	255 47 00	2	4
77	Shackle	82 33 14	1	2
77a	Chain (20 feet)	82 93 60	1	2
78	Access Cover			
	Standard Simplex	03 01 02	1	-
	Standard Duplex	03 01 04	-	1
	Heavy Duty Simplex	03 01 17	1	-
	Heavy Duty Duplex	03 01 19	-	1
	Aluminum Simplex	03 01 32	1	-
	Aluminum Duplex	03 01 34	-	1
79	Cable Holder	251 36 00	1	1
80	Safety Hook	03 01 45	1	2
81	Upper Guide Bracket Ass'y including:	304 28 00	1	2
	└ Bracket	(304 29 01)	(1)	(2)
	└ Threaded Plate	(304 33 01)	(2)	(4)
	└ Rubber Sleeve	(304 35 00)	(2)	(4)
	└ Hex Cap Screw M 8 x 45	(81 41 10)	(2)	(4)
82	Hex Cap Screw 3/8" UNC x 1"	02 01 00	5	7
83	Washer	02 01 02	5	7
84	Extension Plate (for Item 81)	04 01 02	1	2

NOTE: Gasketed and cast iron Access Covers are also available; contact Factory.

NOTE: Item 81 Upper Guide Bracket is the same for CP 3082, CP 3101 and CP 3126.

CP ACCESSORY GROUP

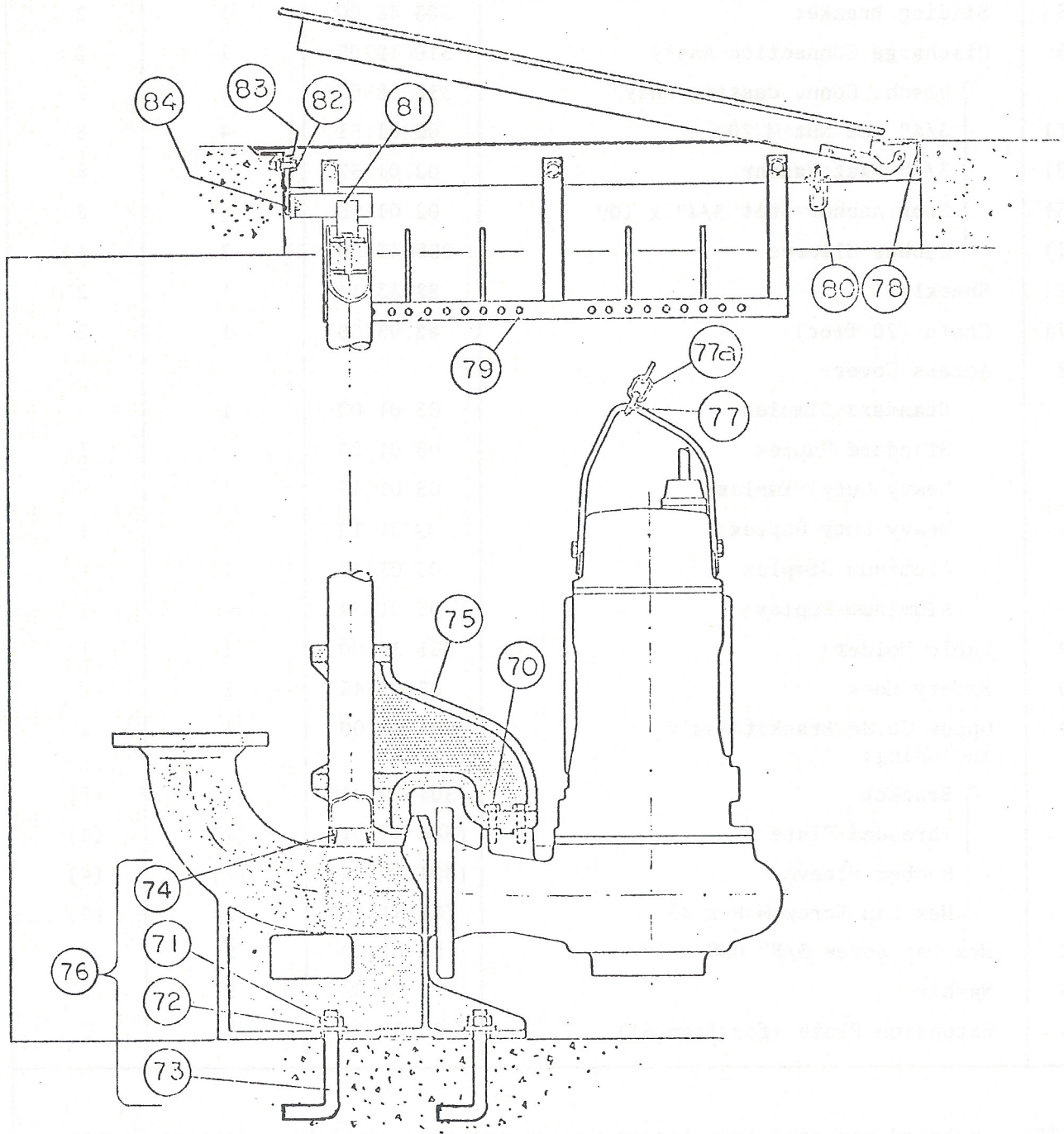


Fig. 4

ADAPTING 4" CP-3082 TO EXISTING 4" CP-3100 DISCHARGE CONNECTION

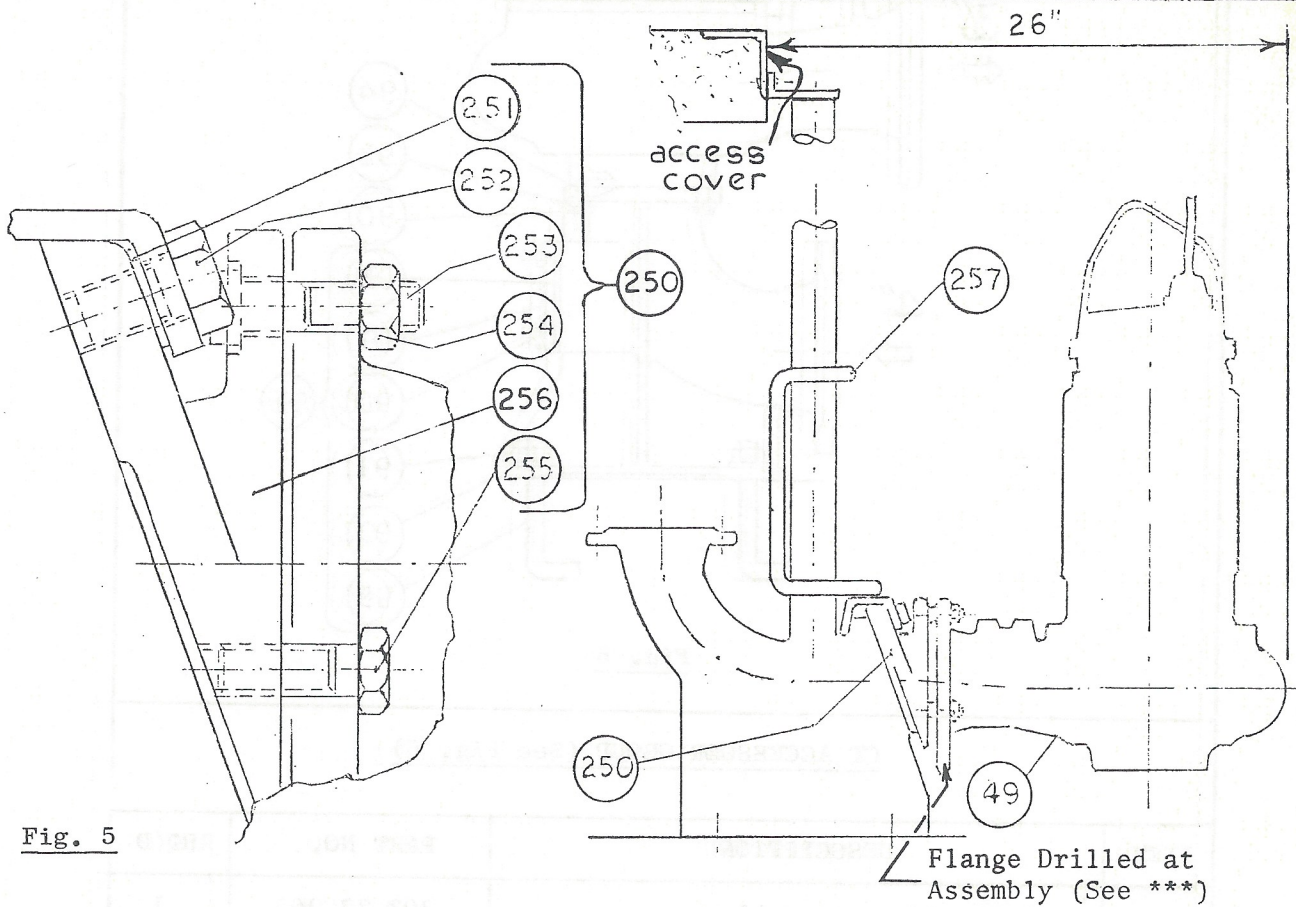


Fig. 5

ITEM	DESCRIPTION	PART NO.	REQ'D
250	Adapter Unit Ass'y	303 84 00	1
(251)	Washer	82 35 26	(2)
(252)	Hex Cap Screw M 20 x 35	84 34 25	(2)
(253)	Hex Cap Screw M 16 x 60	84 34 07	(2)
(254)	Hex Nut M 16	82 23 61	(2)
(255)	Hex Cap Screw M 16 x 45	84 34 04	(2)
(256)	Adapter	*(303 48 00)	(1)
257	Sliding Bracket**	278 87 00	1
49	Volute***		

*NOTE: Part in parenthesis not available separately.

**Sliding Bracket from existing pump (3100) may be used.

***Flange of CP Volute (Item 49) must be drilled to fit Adapter 303 48 00 (Item 256), using Adapter as Template (Four 11/16" Holes).

NOTE: Items 253 & 254 can be substituted by two 5/8" UNC x 2" Hex Cap Screws with Hex Nuts.

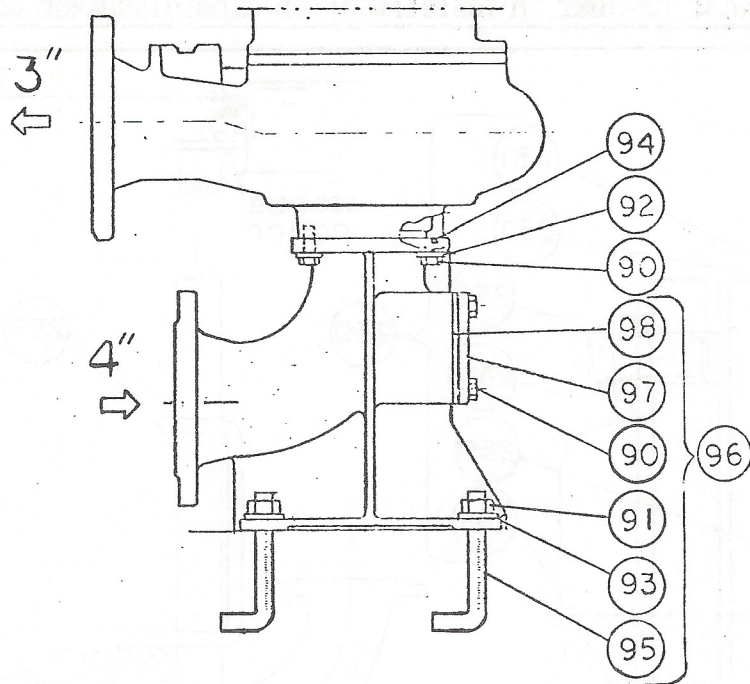


Fig. 6

CT ACCESSORY GROUP (See Fig. 6)

ITEM	DESCRIPTION	PART NO.	REQ'D
96	Inlet Stand Assembly consisting of:	303 72 05	1
-	Inlet Stand	(303 73 05)	(1)
(90)	Hex Cap Screw (For Item 97) M 12 x 30	(81 41 55)	(4)
(91)	Hex Nut M 20	(82 23 62)	(4)
(93)	Washer	(82 35 26)	(4)
(95)	Hex Cap Screw M 20 x 120	(81 39 82)	(4)
(97)	Cleaning Cover	(303 76 00)	(1)
(98)	Gasket	(303 77 00)	(1)
90	Hex Cap Screw (fastens 96 to 49) M 12 x 30	81 41 55	4
92	Washer	82 35 20	4
94	O-Ring	82 74 17	1

NOTE: Item 96 Inlet Stand (Drilled 4" USAS) is the same as for the 4" CT 3101.

NOTE: Item 49b Volute (304 09 05, drilled 3" USAS) must be added to build complete unit.

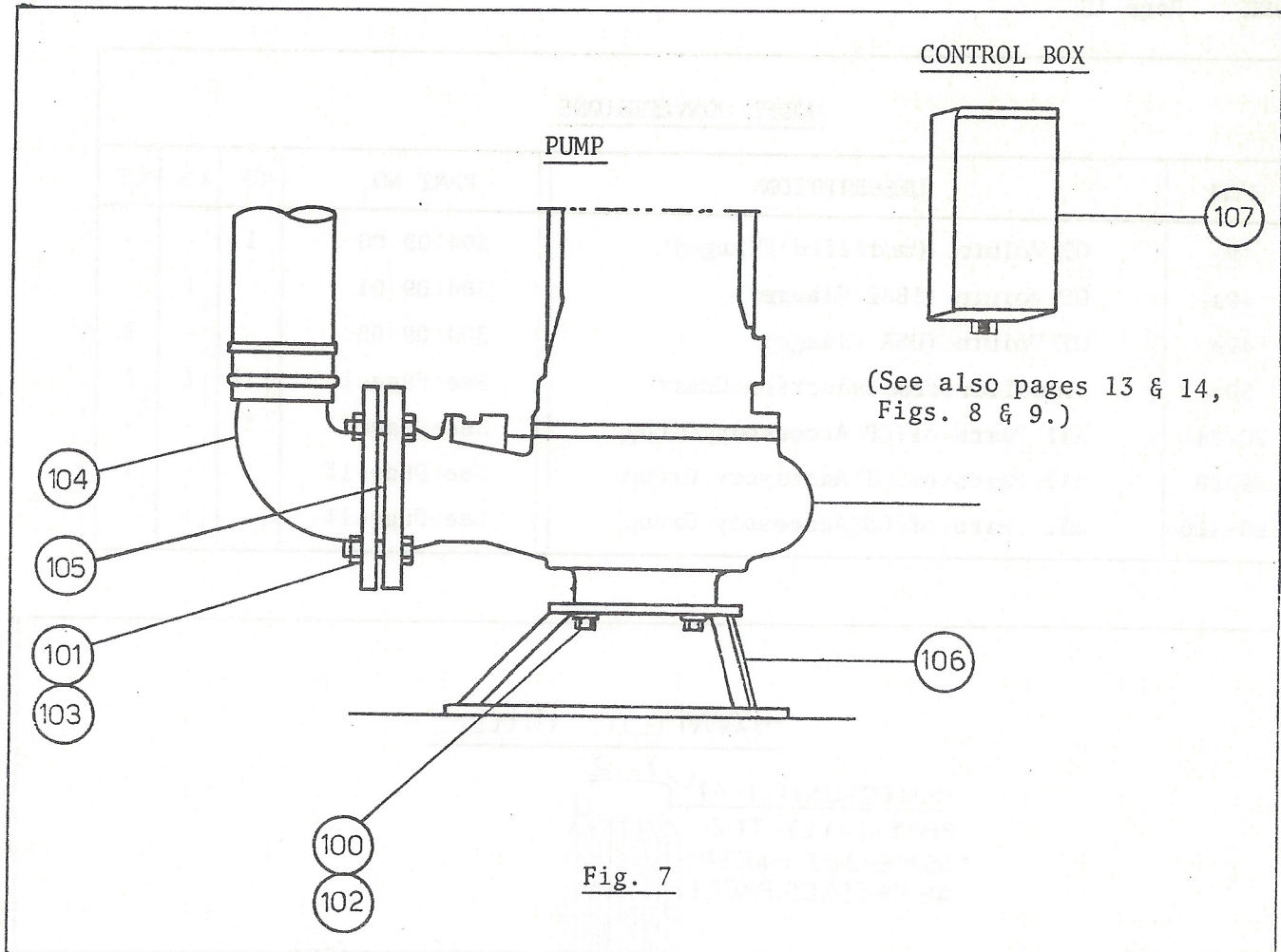


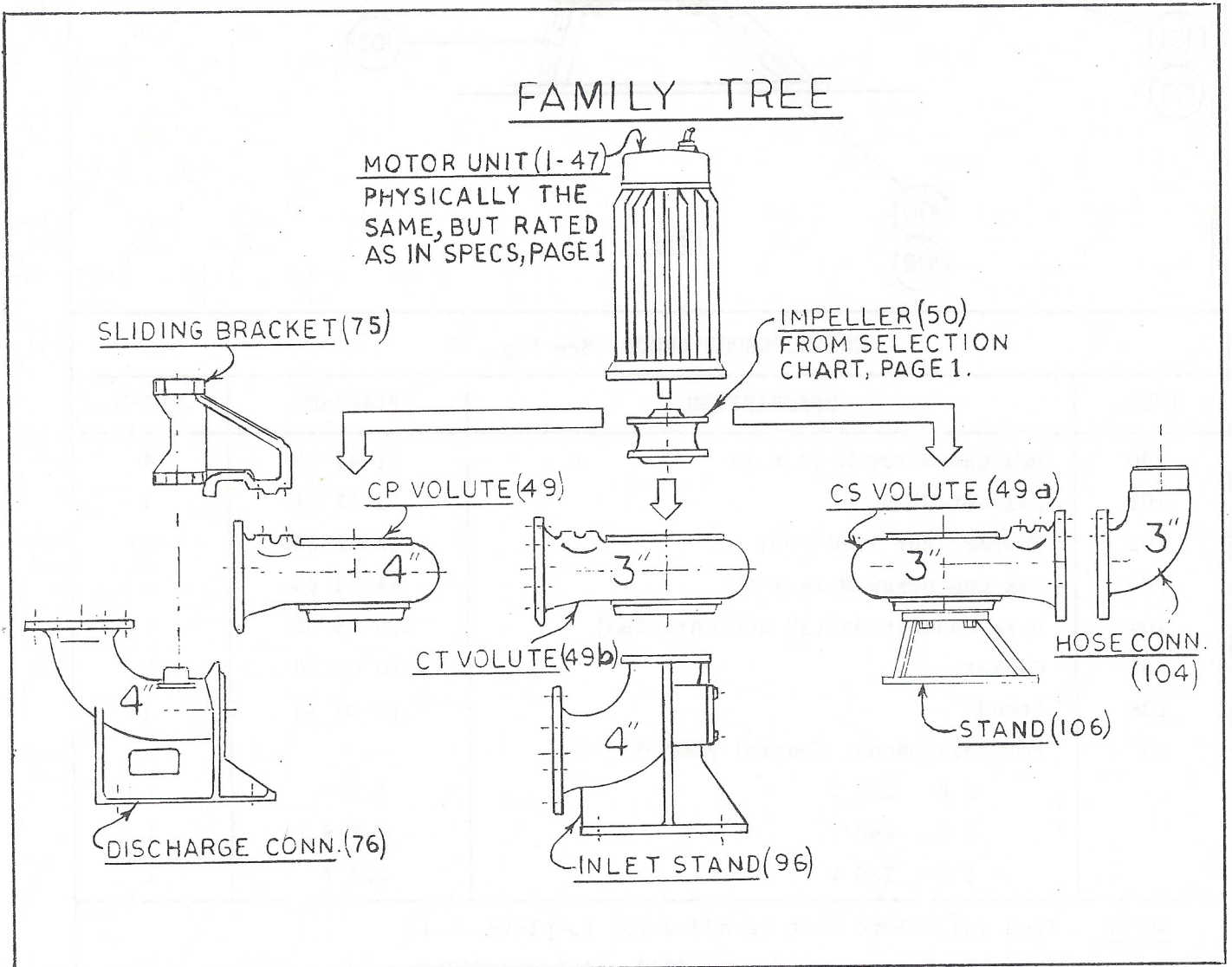
Fig. 7

CS ACCESSORY GROUP (See Fig. 7)

ITEM	DESCRIPTION	PART NO.	REQ'D
100	Hex Cap Screw M 12 x 35	81 41 56	4
101	Hex Nut M 16	82 23 61	4
102	Washer (for Item 100)	82 35 20	4
103	Hex Cap Screw M 16 x 65	84 34 08	4
104	Hose Connection (3" non-threaded)	310 03 00	1
105	Gasket	310 05 00	1
106	Stand	03 01 51	1
107	Portable Manual Control NEMA 3		
	3 ∅ 230 V	4.716	1
	3 ∅ 460 V	4.718	1
	1 ∅ 230 V	4.717	1

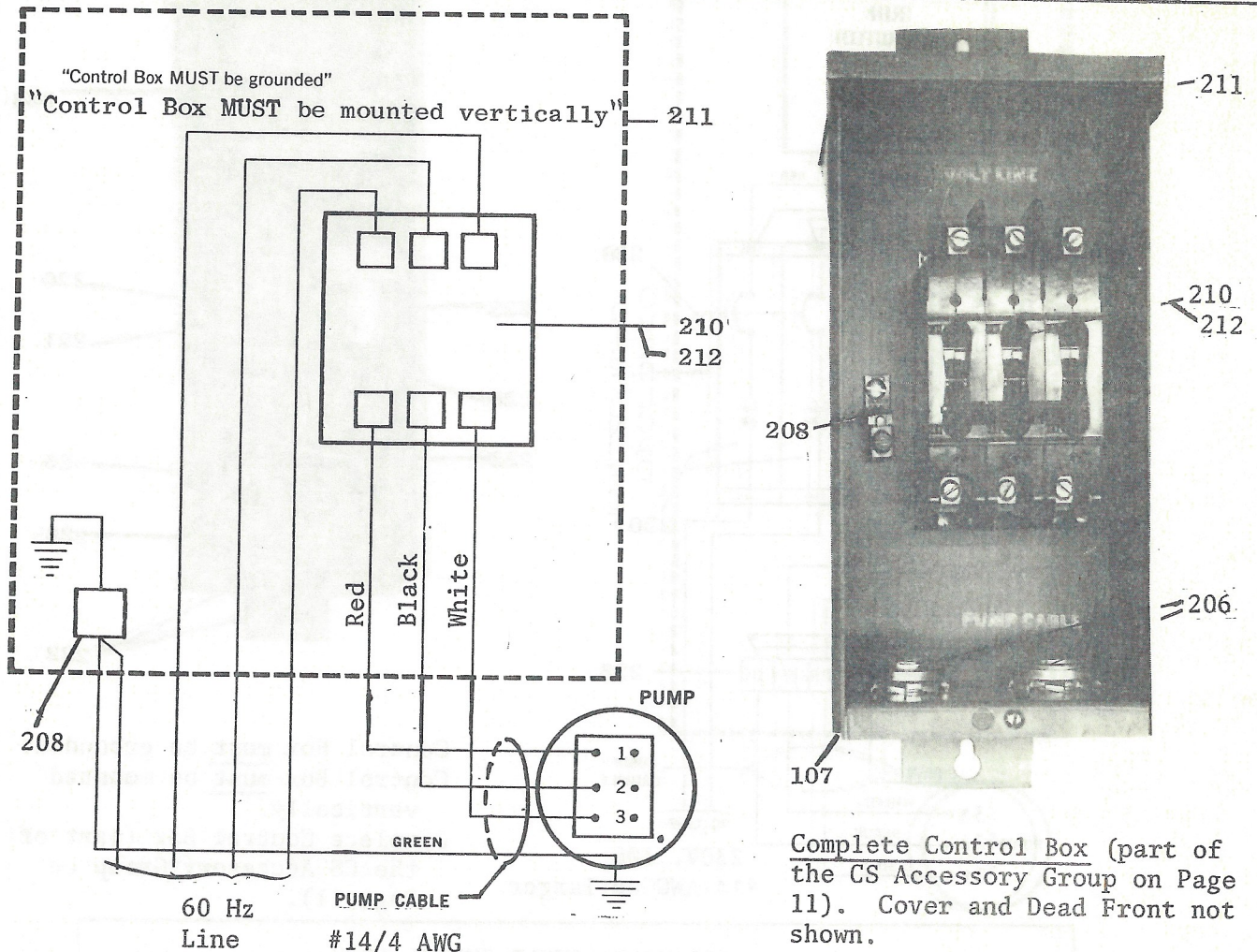
NOTES: Item 49a Volute must be added for complete unit.
 Item 106 Stand same for CS 3082, 3101 and 3126.

MODEL CONVERSIONS					
ITEM	DESCRIPTION	PART NO.	CP	CS	CT
49	CP Volute (Undrilled Flange)	304 09 00	1	-	-
49a	CS Volute (1882 Flange)	304 09 01	-	1	-
49b	CT Volute (USA Flange)	304 09 05	-	-	1
50	Impeller from Selection Chart	See Page 1	1	1	1
70-84	All Parts of CP Accessory Group	See Page 7	1	-	-
90-98	All Parts of CT Accessory Group	See Page 13	-	-	1
100-106	All Parts of CS Accessory Group	See Page 14	-	1	-



3 PHASE PORTABLE MANUAL CONTROL BOX FOR CS VERSION

3 PHASE, NEMA 3



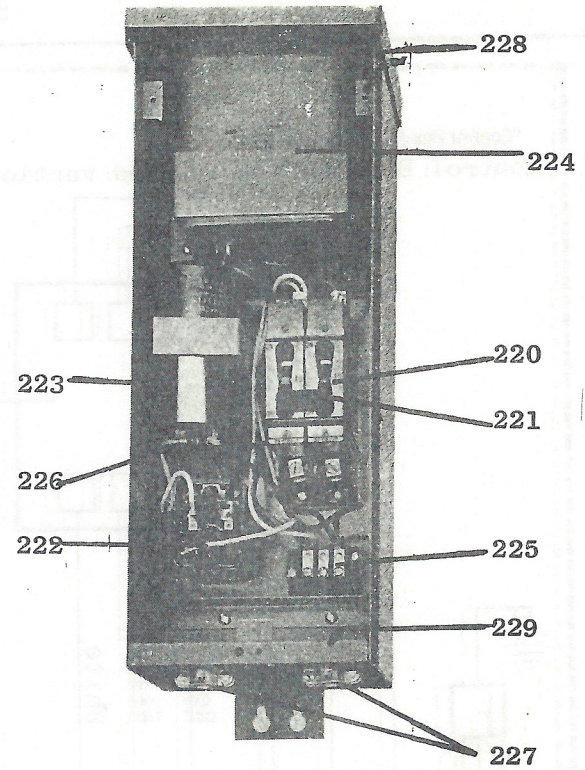
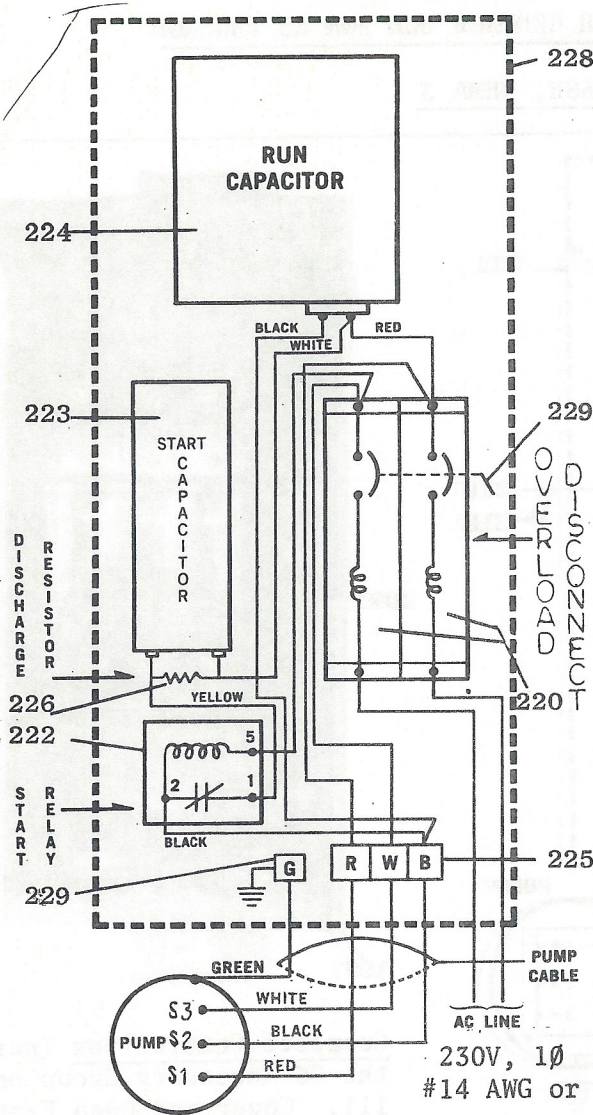
#12 AWG or larger

Fig. 8

230V, 3 PHASE				460V, 3 PHASE			
ITEM	DESCRIPTION	PART NO.	REQ'D	ITEM	DESCRIPTION	PART NO.	REQ'D
107	Control Complete	4.716	1	107	Control Complete	4.718	1
210	Overload Unit	OL 43050	1	212	Overload Unit	OL 43025	1
206	Cable Clamp	CC 03101	2	206	Cable Clamp	CC 03101	2
208	Grounding Lug	GL 1022	1	208	Grounding Lug	GL 1022	1
211	Enclosure Compl.	ENB 0012A	1	211	Enclosure Compl.	ENB 0012A	1
	└ Outer Cover	ENB 0012-1	(1)		└ Outer Cover	ENB 0012-1	(1)
	└ Inside Cover	ENB 0012-2	(1)		└ Inside Cover	ENB 0012-2	(1)

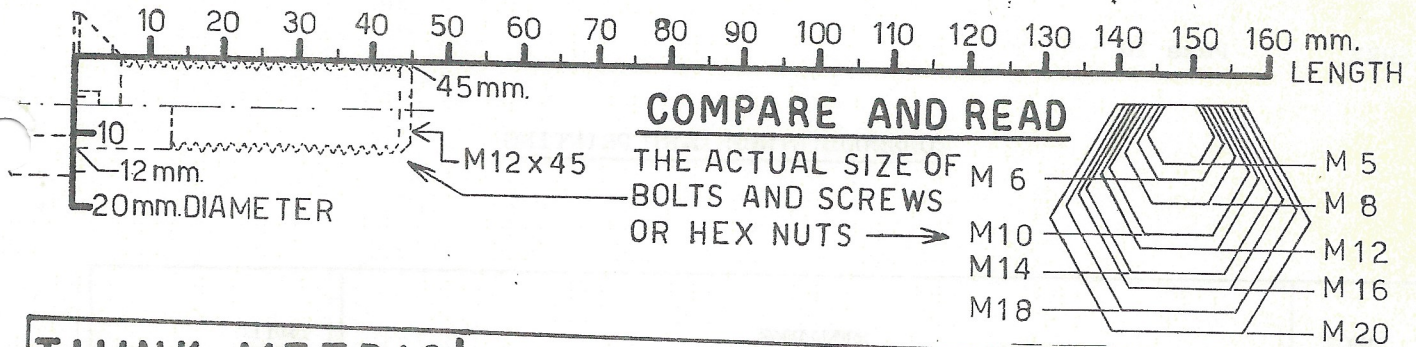
NOTE: Control for 575V is available by request only.

CS 3082 1-PHASE STARTER CONTROL PARTS LIST

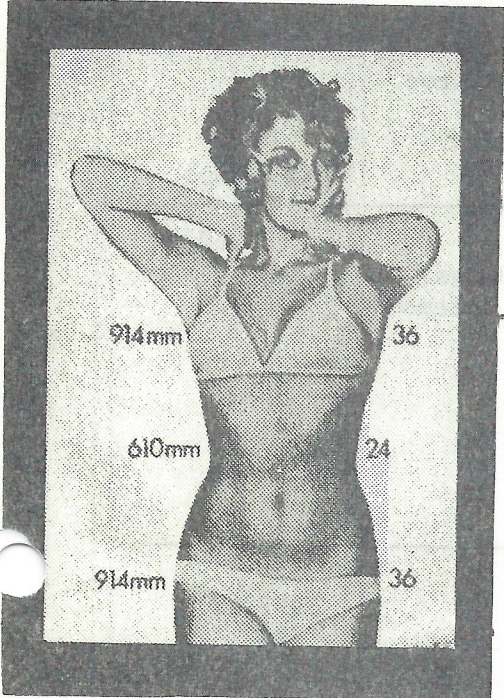


Control Box must be grounded.
 Control Box must be mounted vertically.
 Complete Control Box (part of the CS Accessory Group on Page 11).

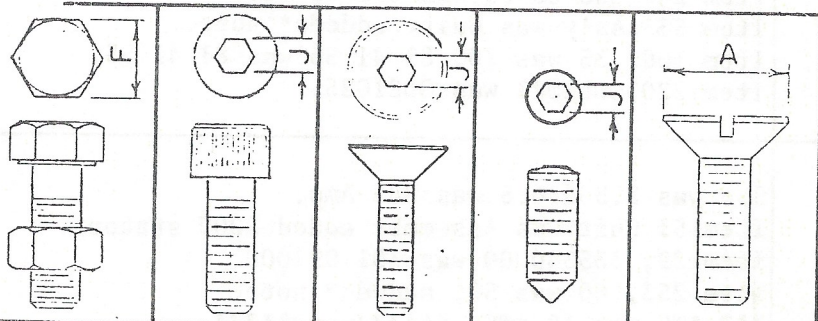
230 VOLT SINGLE PHASE, 60 Hz			
ITEM NO.	PART NO.	DESCRIPTION	QTY.
107	4.717	Control, Complete	1
220	OL 21011	Overload-Disconnect	2
221	CT 21	Tie Handle	1
222	SR 218	Start Relay	1
223	SC 21225-4	Start Capacitor	1
224	RC 21067-3	Run Capacitor	1
225	TB 0302	Terminal Board	1
226	DR 2015-K	Discharge Resistor	1
227	CC 03101	Cable Clamp	2
228	ENB 0004	Enclosure, Complete	1
	ENB 0004-1	Cover, Outer	(1)
	ENB 0004-2	Cover, Inner	(1)
229	GL 1022	Grounding Lug	1



THINK METRIC!



...says Miss Metric (914-610-914), and use these handy millimeter scales to measure and identify your metric bolts and screws (diameter/length scale) or hexagon nuts (hexagon scale). The curvaceous lass was crowned Miss Metric and her dimensions expressed both in inches and millimeters to get the point across in Britain when that country decided to switch to metric. The U.S. will take the same step sooner or later--at that time we will hopefully be able to throw away our conversion tables and enjoy the picture of a Miss Metric U.S.A.!



METRIC THREADS				HEX HD. CAP SCR. OR NUT		SOCKET HD. CAP SCREW		FLAT HD. SOCK. SCR.		SOCKET SET SCR.		FLAT HD. MACH. SCR.	
DIA MM	PITCH MM	APPR. TPI	TAP DR. MM	F ACR. FLAT		J HEX KEY		J HEX KEY		J HEX KEY		A HEAD DIA	
				MM	INCH	MM	INCH	MM	INCH	MM	INCH	MM	INCH
M5	0.80	32	4.20	8	.315	4	.158	3	.118	2.5	.098	10	.394
M6	1.00	25	5.00	10	.394	5	.197	4	.158	3	.118	12	.472
M7	1.00	25	6.00	11	.433	-	-	-	-	-	-	-	-
M8	1.25	20	6.75	13	.512	6	.236	5	.197	4	.158	16	.630
M10	1.50	17	8.50	17	.669	8	.315	6	.236	5	.197	20	.787
M12	1.75	14½	10.25	19	.748	10	.394	8	.315	6	.236	24	.945
M14	2.00	12½	12.00	22	.866	12	.472	10	.394	-	-	27	1.063
M16	2.00	12½	14.00	24	.945	14	.551	10	.394	8	.315	30	1.181
M18	2.50	10	15.50	27	1.063	14	.551	12	.472	-	-	-	-
M20	2.50	10	17.50	30	1.181	17	.669	12	.472	10	.394	36	1.417

ADDENDUM SINCE LAST PRINTING

<u>PAGE</u>	<u>REMARKS</u>	<u>DATE</u>
1 2 3 5	Added 082- to impeller codes. 7.4/3.7 was 6.8/3.4, 2.9 was 2.7, 9.5 was,8.8. Added 200V for Separate Stator. 338 13 00 was 303 45 00. Added "*". Added 082- to Impeller Code. Item #25, 337 95 00 was 318 32 00, picture change.	1972-01
1 2 3 5 6 11 14	Added 6-Pole and 200 Volt Data Item 36, removed Terminal Board Item 4-/a 320 69 00 was 274 52 00. Item 42 removed Shaft, Unit was Ass'y. Item 44 304 05 01 was 304 05 00. Added 6-Pole data, and Note for tools. Item 24 335 36 00 was 302 05 08. Item 53 Ass'y was Unit, added * note. Item 100 35 was 30, 81 41 56 was 81 41 55. Item 220 OL21011 was OL21025.	1972-07 R-1
1 3 5 9 13	5.6 was 5.5 & 6.5 was 8.5 Amp. Item 51 Unit was Assembly added 200V stator. Item 29, 335 40 00 was 301 91 00. Item 253, 60 was 50, added * note. #12 AWG was 10 AWG, #14/4 was #12/4.	1972-11 R-2
5 7	Item 24, 335 36 02 was 335 36 00 Item 71, 02 01 51 was 82 23 62 Item 72, 02 01 52 was 82 35 26. Item 73, 02 01 50 was 8139 82	1974-01 R-3
5	Item 31, 335 36 03 was 302 05 09	1974-11 R-4

This Parts List will be revised and reprinted periodically. List of items revised since last printing will appear on this page. For information on latest reprint or for extra copies, contact Flygt Corporation.