

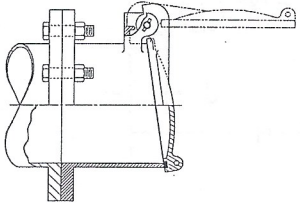
CAST IRON

# Flap Valves

FOR PUMP DISCHARGE

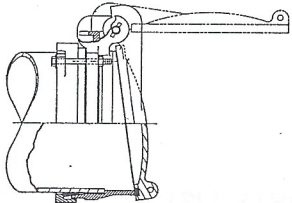
JUL 13 1987

Waterman Model PF-25 flap valves are designed for use on pump discharge lines and other pipe end closures to prevent entrance of back water. These valves are furnished with a variety of frame styles to fit most installation needs. A  $7\frac{1}{2}^\circ$  inclined seating plane is used to ensure that the valve will not "hang open" from slight pipe sagging or off grade. A positive stop prevents over opening.



The flange model (PF-25f) may be furnished with either iron or bronze seat faces. Bronze hinge pins are standard. Drilling is ANSI 125 lb. standard.

**Cast Iron Body • Flange or Compression Mounted  
Cast Iron Cover • Aluminum Cover Optional  
Cast Iron, Bronze or Resilient Seat Faces  
Bronze Hinge Pins •  $7\frac{1}{2}^\circ$  Seating Plane**



The popular compression model (PF-25w) uses time proven wedge type seals to install quickly and easily on plain end standard steel pipe. A special gasket is furnished for use with O.D. sized steel pipe. This model is standard with a cast iron frame with machined seat face and a cast iron cover with a resilient neoprene rubber seat face. Follow ring is cast iron with rubber wedge gasket and plated steel draw bolts.

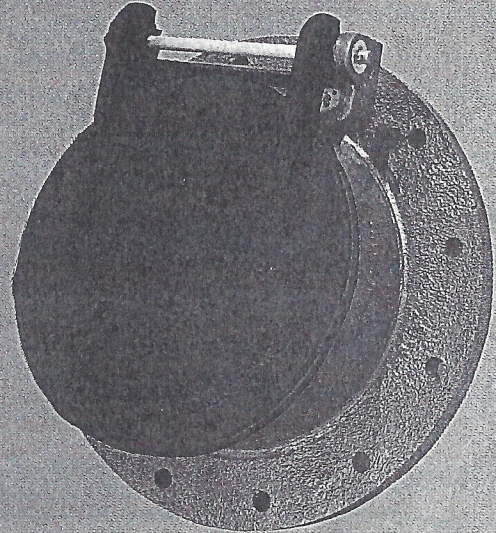
Valves are available with aluminum covers and neoprene seat faces where extra sensitivity is desired. Special treated bodies and collars for installation in concrete pipe are available.

See price list for sizes and weights available.

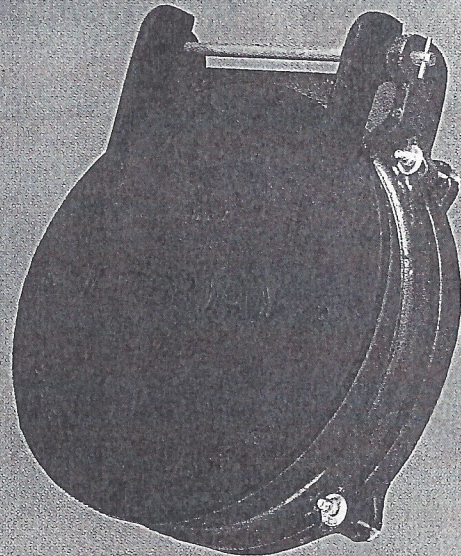
**Waterman** INDUSTRIES, INC.

EXETER, CA • LUBBOCK, TX • GARDEN CITY, KS • BOISE, ID • MEMPHIS, TN  
RED TOP WATER CONTROL GATES, VALVES and EQUIPMENT

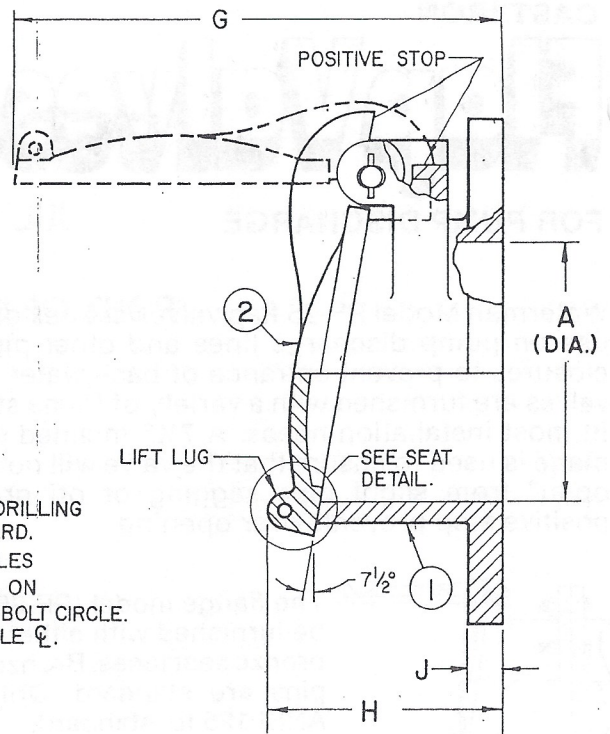
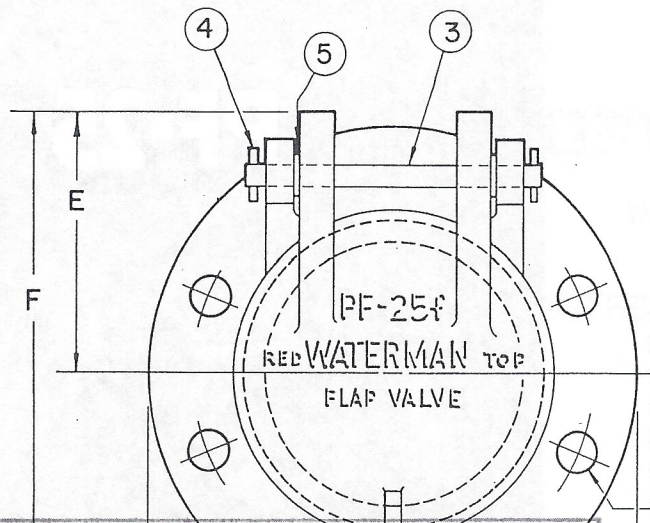
MODEL **PF-25**



MODEL PF-25F  
FLANGE MOUNTED



MODEL PF-25W  
COMPRESSION COUPLING



This submittal has been reviewed for compliance with general requirements of design and arrangement only, and is not a contract document and acknowledgment of compliance does not relieve Contractor of responsibility for performance of the work in compliance with all provisions and requirements of the Contract documents. Job measurements and drawings are not to be used for proper fit of all parts of the work and performance of all equipment supplied to meet specification requirements are and remain specific responsibilities of the Contractor.

125 LB. DRILLING STANDARD.  
 M Ø HOLES  
 N PLCS. ON  
 BC DIA. BOLT CIRCLE.  
 STRADDLE C.

Compliance acknowledged subject to the  
 **ALTERNATE SEATS AVAILABLE**

Compliance acknowledged subject to the  
 MACHINED IRON  
 COMP. SEAT IN COVER.  
 MACH. IRON SEAT BODY

Compliance acknowledged as noted and subject to the  
 BRONZE SEAT  
 COVER & BODY  
 COMP. SEAT IN COVER.  
 BRONZE SEAT ON BODY

**Boyay Northwest Inc.**

By \_\_\_\_\_ Date 7-9

**NOTES**

- DESIGNED FOR USE ON PUMP DISCHARGE LINES.
- 25 LB. DRILLING AVAILABLE ON REQUEST.

GATE DIMENSIONS IN INCHES.

GATE SIZE	4	6	8	10	12	14	16	18	20	24
A	4	6	8	10	12	14	16	18	20	24
BC	7 1/2	9 1/2	11 3/4	14 1/4	17	18 3/4	21 1/4	22 3/4	25	29 1/2
D	9	11	13 1/2	16	19	21	23 1/2	25	27 1/2	32
E	4 5/8	5 11/16	6 7/8	8 1/8	9 3/8	10 7/16	11 5/8	12 1/4	13 3/8	15 1/2
F	9 1/8	11 3/16	13 5/8	16 1/8	18 7/8	20 5/16	23 3/8	24 3/4	27 1/8	31 1/2
G	8 1/4	11 7/8	14 1/4	16 1/4	18 5/8	22 1/4	24 1/4	26 1/4	28 3/4	32 3/4
H	6 1/4	7 5/8	8	8	8 1/2	10 1/2	10 1/2	10 1/2	11	11
J	1	1	1	1	1	1	1	1 1/8	1 1/8	1 1/4
M	3/4	7/8	7/8	1	1	1 1/8	1 1/8	1 1/4	1 1/4	1 3/8
N	8	8	8	12	12	12	16	16	20	20

**PARTS LIST**

- ① BODY (FLANGED)
- ② COVER
- ③ HINGE PIN
- ④ SPRING PIN
- ⑤ WASHER

**WATERMAN MODEL**  
 PF-25f FLAP VALVE



WATERMAN  
 INDUSTRIES, INC.  
 EXETER, CALIF.

SCALE - NONE      DATE: JULY 1979

CATALOG  
 DR. NO. - 0013-1

REVISION  
 11 A 82

NOTE: FOR PRELIMINARY DESIGN PURPOSES ONLY  
 DO NOT USE FOR INSTALLATION UNLESS PART OF CERTIFIED & APPROVED SUBMITTAL.